

SSS15b Not Shown

# SLIP SAFE SUPREME SIGN SUPPORT

**NUCOR**  
 BAR MILL GROUP  
 NUCOR STEEL MARION, INC.

SSS15a-c

SHEET NO. 1 of 4	DATE: 05/17/07
---------------------	-------------------

### INTENDED USE

The Slip Safe Supreme Breakaway Sign Support is to be used where a breakaway u-channel slip splice coupling device is needed. One, two, or three posts may be used in a 82 5/8 [2100] span in strong or weak soil. A one-post support with the slip splice may be used as an omni-directional device when approaching traffic is expected from various directions.

### COMPONENTS

The system consists of an upper and lower stub section, each consisting of opposing u-channel posts. The upper and lower stubs are inserted into respective upper and lower sleeves comprised of opposing post slip base halves. These slip base halves are bolted together along the outer flanges with 1/2 x 2 [12.7 x 51] hex head bolts, each with (2) flat washers, (1) lockwasher, and (1) nut. The post stubs are connected to the sleeve tubes via a 1/4 x 3 [6.4 x 76] hex head bolt, each with (1) flatwasher, (1) lockwasher, and (1) nut. A 26 ga. [.5] thick bolt keeper plate separates the upper and lower sleeve. The bolt keeper plate is secured on each end with a slip bolt keeper channel. Each channel connects the sleeve base plates and bolt keeper plate via 3/4 x 2 3/4 [19 x 70] hex head bolts, each with (2) flat washers, (1) lockwasher, and (1) nut.

This system can support either:

- (2) 3 lb/ft (4.46 kg/m) (PFP05) back-to-back creating a 6 lb/ft (8.9 kg/m) section
- (2) 4 lb/ft (5.95 kg/m) (PFP06) back-to-back creating a 8 lb/ft (11.9 kg/m) section

### APPROVALS

FHWA Acceptance Letter [SS-69](#), 09/18/1996  
FHWA Acceptance Letter [SS-69a](#), 04/04/1997

### REFERENCES

- L.A. Staron, "Breakaway Sign Supports," Geometric and Roadside Design Acceptance Letter SS-13, Federal Highway Administration, Washington, D.C., October 2, 1989.
- L.A. Staron, "Breakaway Sign Supports," Geometric and Roadside Design Acceptance Letter SS-13, Federal Highway Administration, Washington, D.C., July 13, 1996.
- S.I. Sillan, "Breakaway Sign Supports," Geometric and Roadside Design Acceptance Letter SS-13, Federal Highway Administration, Washington, D.C., March 14, 1996.

## SLIP-SAFE SUPREME SIGN SUPPORT

**SSS15a-c**

SHEET NO.

DATE

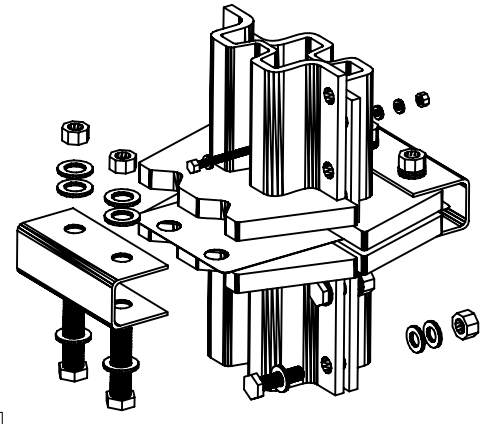
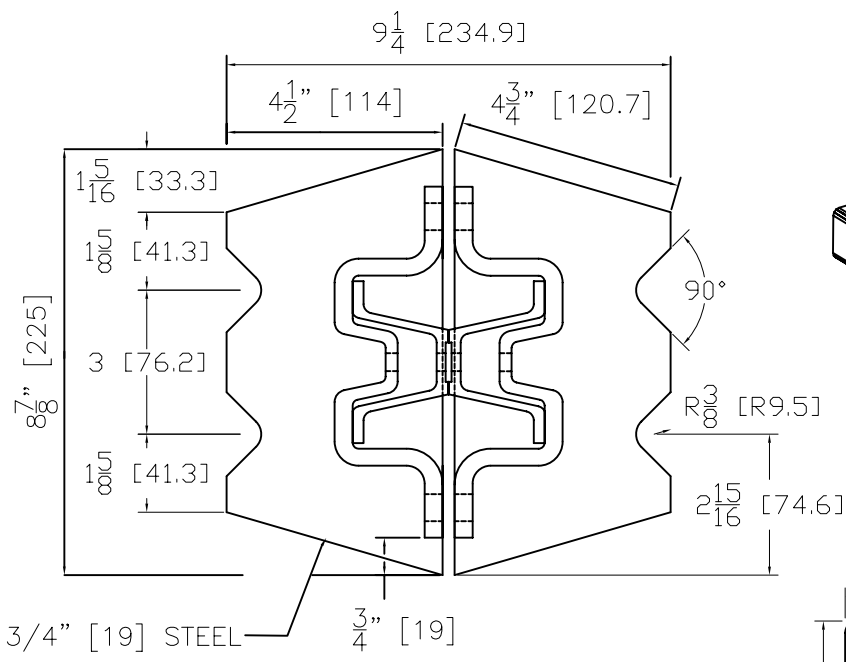
2 of 4

05/17/2007

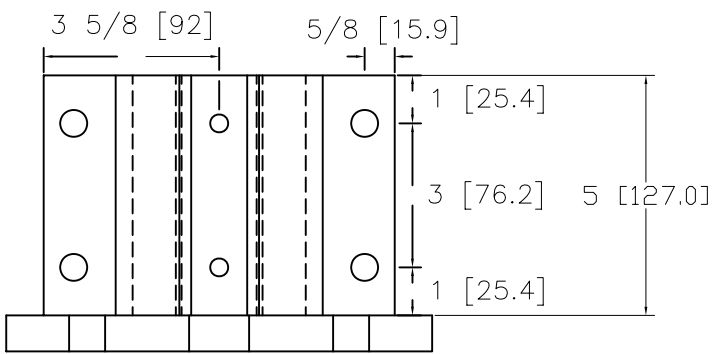
**NUCOR**

BAR MILL GROUP

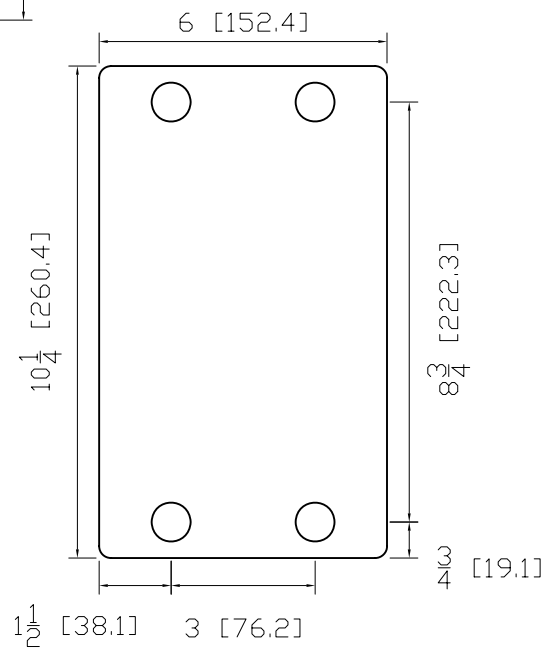
NUCOR STEEL MARION, INC.



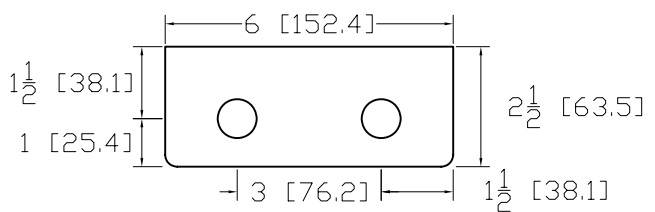
TOP



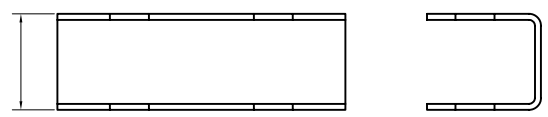
SIDE



KEEPER PLATE



C BRACKET



SLIP SAFE SUPREME SIGN SUPPORT

**NUCOR**  
 BAR MILL GROUP  
 NUCOR STEEL MARION, INC.

SSS15a-c

SHEET NO.	DATE:
3 of 4	05/17/07

**CONTACT INFORMATION**

The Nucor Steel Marion Inc., 912 Cheney Avenue, Marion, Ohio 43301-1801  
(800) 333-4011  
(740) 383-6429 Fax  
[www.nsmarion.com](http://www.nsmarion.com)

*\* All Nucor Steel Marion Inc. products are produced from 100% recycled steel.*



**SLIP-SAFE SUPREME SIGN SUPPORT**

**SSS15a-c**

**NUCOR**

**BAR MILL GROUP  
NUCOR STEEL MARION, INC.**

SHEET NO.

DATE

4 of 4

05/17/2007