

SSS15a

SSS15c

SIDE

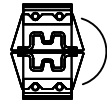
FRONT

(OPTION) ROTATED 180 DEG.

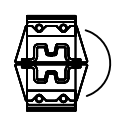
OMNI-DIRECTIONAL
(ONE POST)



OR



BI-DIRECTIONAL
(TWO & THREE POST)



↑
DIRECTION OF
TRAFFIC

TOP

SSS15b Not Shown
Not To Scale

SLIP SAFE SUPREME SIGN SUPPORT



SSS15a-c

SHEET NO.	DATE:
1 of 4	09/01/2011

INTENDED USE

The Slip Safe Supreme Breakaway Sign Support is to be used where a breakaway u-channel slip splice coupling device is needed. One, two, or three posts may be used in an 82 5/8 [2100] span in strong or weak soil. A one-post support with the slip splice may be used as an omni-directional device when approaching traffic is expected from various directions.

COMPONENTS

The system consists of an upper and lower stub section, each consisting of opposing u-channel posts. The upper and lower stubs are inserted into respective upper and lower sleeves comprised of opposing post slip base halves. These slip base halves are bolted together along the outer flanges with 1/2 x 2 [12.7 x 51] hex head bolts, each with (2) flat washers, (1) lock-washer, and (1) nut. The post stubs are connected to the sleeve tubes via a 1/4 x 3 [6.4 x 76] hex head bolt, each with (1) flat-washer, (1) lock-washer, and (1) nut. A 26 ga [.5] thick bolt keeper plate separates the upper and lower sleeve. The bolt keeper plate is secured on each end with a slip bolt keeper channel. Each channel connects the sleeve base plates and bolt keeper plate via 3/4 x 2 3/4 [19 x 70] Grade 8 hex head bolts, each with (2) flat-washers, (1) lock-washer, and (1) nut.

A soil stabilization plate (PLS02) is available for situations when additional soil support is needed. The plate's primary function is providing increased stability to the base post for greater wind load carrying purposes, and increasing the integrity of the base post during vehicular impact. The soil plate is required in soft soil and is optional in all other configurations. The soil plate (PLS02) connected to post via (2) 5/16 x 2 1/2 in. [8 x 65 mm] 18unc Grade 5 or better hex head bolt with standard hex nut. Galvanized hardware is preferred.

This system can support either one, two or three posts of the following sizes:

- (2) 3 lb/ft (4.46 kg/m) (PFP05) back-to-back creating a 6 lb/ft (8.9 kg/m) section
- (2) 4 lb/ft (5.95 kg/m) (PFP06) back-to-back creating a 8 lb/ft (11.9 kg/m) section

APPROVALS

FHWA Acceptance Letter SS-69, September 18, 1996

FHWA Acceptance Letter SS-69A, April 4, 1997

SLIP-SAFE SUPREME SIGN SUPPORT

SSS15a-c

SHEET NO.

DATE

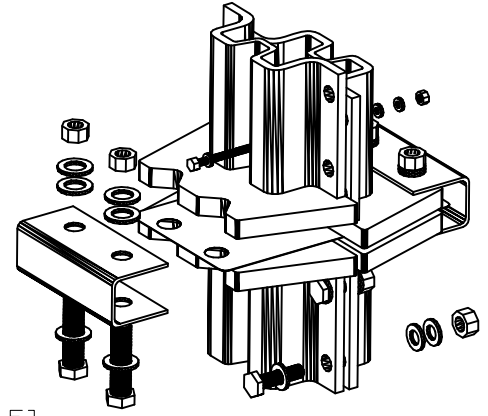
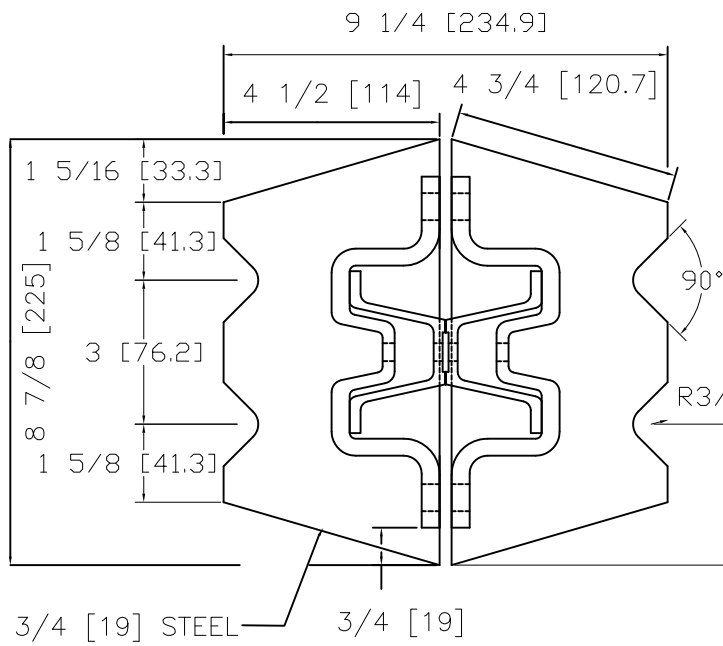
2 of 4

09/01/2011

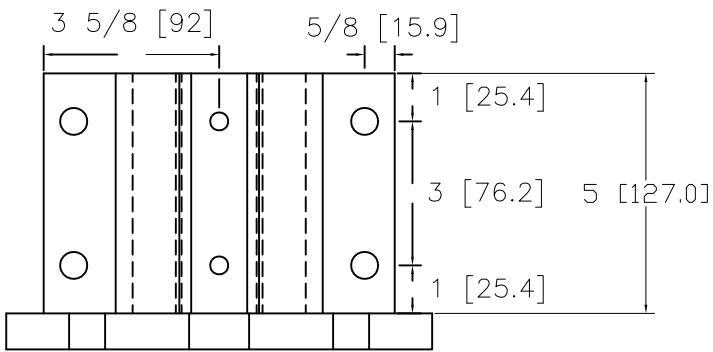
NUCOR

BAR MILL GROUP

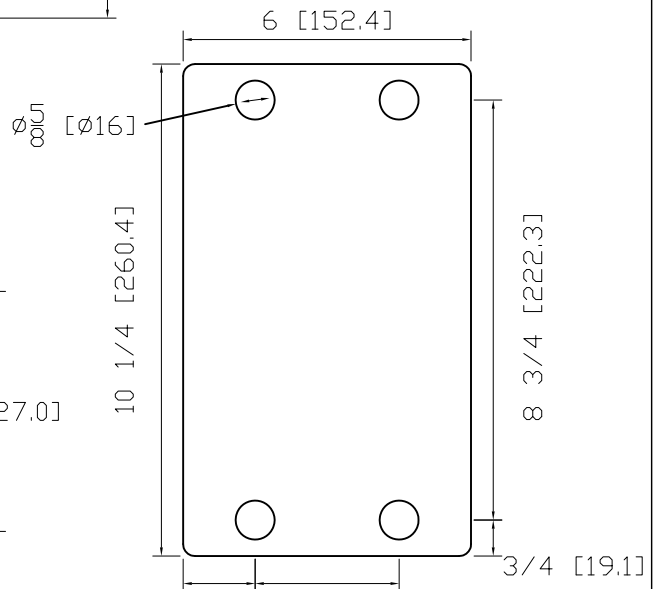
NUCOR STEEL MARION, INC.



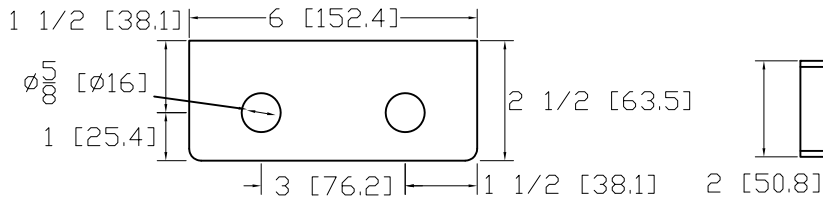
TOP



SIDE



KEEPER PLATE



C BRACKET

UNITS: IN [MM]

SLIP SAFE SUPREME SIGN SUPPORT



SSS15a-c

SHEET NO.

DATE:

3 of 4

09/01/2011

CONTACT INFORMATION

The Nucor Steel Marion Inc.
912 Cheney Avenue
Marion, Ohio 43301-1801
(800) 333-4011
(740) 383-6429 Fax

www.nucorhighway.com

** All Nucor Steel Marion Inc. products are produced from 100% recycled steel.*



SLIP-SAFE SUPREME SIGN SUPPORT

SSS15a-c

NUCOR

BAR MILL GROUP

NUCOR STEEL MARION, INC.

SHEET NO.

DATE

4 of 4

09/01/2011