

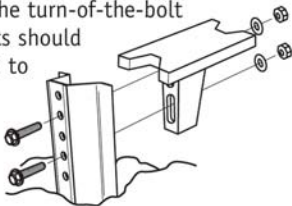
THE SLIP SAFE™ REUSABLE SLIP-BASE SYSTEM

Patent Nos. D389.252 and D389.253

Installation

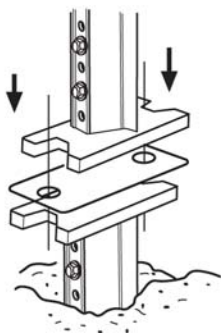
The SLIP SAFE reusable slip-base system consists of two single-post castings, two SLIP SAFE attachment bolts, nuts, flat washers and lock washers, four $\frac{3}{8}$ x $1 \frac{1}{4}$ in. SLIP SAFE socket-head attachment bolts, nuts, flat washers, two U-brackets and one galvanized 28-gage keeper plate.

- 1** Drive the base post into the ground so that no more than 3 in. is above ground level. Nest casting into top of base post. Insert two $\frac{3}{8}$ x $1 \frac{1}{4}$ in. SLIP SAFE attachment hex bolts through the base post. Place the nuts with flat washers on the bolts. Tighten the bolts using the turn-of-the-bolt method. The bolts should be tightened $\frac{1}{2}$ to $\frac{3}{4}$ turn after snug.



- 2** Nest the next casting to the top post. Attach the second casting to the top post in the same manner as the first casting was attached.

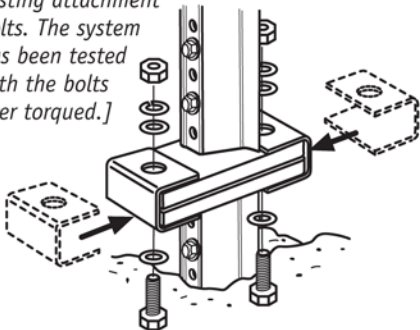
- 3** Place keeper plate on top of the base post SLIP SAFE casting, keeping plate holes aligned to V-notches in casting.



- 4** Position the assembled SLIP SAFE top post with attached casting over the keeper plate and base post's SLIP SAFE casting so that both castings align.

See #3 diagram on front.

- 5** Slip U-brackets over both ends of castings. Place a flat washer on the end of the SLIP SAFE casting attachment bolt and insert it from the bottom, up through the U-bracket and the keeper plate. Repeat for other side of casting. Place a second flat washer over the protruding bolt. Put on lock washer and nut and tighten. Using the turn-of-the-bolt method, the attachment nut should be tightened 1/3 to 1/2 turn after snug. Repeat for other side of casting. *[This must be a tight fit. Do not worry about not activating due to "over torquing" of the SLIP SAFE casting attachment bolts. The system has been tested with the bolts over torqued.]*



Note: If installing the posts in soft soil (s2), a SOIL PLATE IS REQUIRED. If posts are punched with 3/8-in. holes, the 3/8-in. SLIP SAFE attachment bolt holes will need to be slightly reamed to accept 3/8-in. hardware. Specially pre-punched ground and top posts for the SLIP SAFE system are available.

NUCOR

NUCOR STEEL MARION, INC.

912 Cheney Avenue • Marion, Ohio 43302
740/383-4011 • www.nsmarion.com

AMERICA'S SIGNPOST LEADER