

SLIP-SAFE U-CHANNEL SIGN SUPPORT

**NUCOR**  
BAR MILL GROUP  
NUCOR STEEL MARION, INC.

SSS14

SHEET NO.

DATE:

1 of 4

05/10/07

### INTENDED USE

The Slip Safe Breakaway Sign Support is to be used where a breakaway u-channel slip splice coupling device is needed. One, two, or three posts may be used in a 82 5/8 [2100] span in strong or weak soil. A one-post support with the slip splice may be used as an omni-directional device when approaching traffic is expected from various directions. Casting base can also be combined in any configuration between square tube and U-channel sign supports. For example, a square base post and casting can mate with a U-channel top post and casting or vice versa.

### COMPONENTS

The system consists of an upper and lower section, each consisting of a square tube or u-channel post and casting. If it is a square tube, the slip base castings are connect to the post sections via a 3/8 x 2 1/2 [9.5 x 64] standard grade 5 bolt each with (1) flat washer, (1) lock washer and (1) flange nut or standard corner bolt. If it is a U-Channel, the base castings are connected via a 5/16 x 1 3/8 [7.9 x 35] socket head cap screw each with (1) flat washer, (1) lock washer and (1) flange nut. A 28ga [.4] thick slip plate separates the upper & lower base castings. The slip plate is is secured on each end with a C-Bracket. Each C-Bracket connects the slip base castings and slip plate via 9/16 x 2 [14 x 51] hex head bolts, each with (2) flat washers, (2) lock washers and (1) flange nut.

The SSS14 system casting will support 2lb/ft through 4lb/ft [2.98 or 5.95 kg/m] u-channel sign top posts (PFP02-06). Base posts are recommended to be 4lb/ft u-channel posts (PFP06). The SSS14 system casting with u-channel top post can be attached to the SSS13 system casting with a 2.5 in [64mm] square tube base posts (PTP24, PTP44).

### APPROVALS

FHWA Acceptance Letter [SS-69A](#), 04/04/1997

### REFERENCES

L.A. Staron, "Breakaway Sign Supports," Geometric and Roadside Design Acceptance Letter SS-13, Federal Highway Administration, Washington, D.C., October 2, 1989.

L.A. Staron, "Breakaway Sign Supports," Geometric and Roadside Design Acceptance Letter SS-13, Federal Highway Administration, Washington, D.C., July 13, 1996.

S.I. Sillan, "Breakaway Sign Supports," Geometric and Roadside Design Acceptance Letter SS-13, Federal Highway Administration, Washington, D.C., March 14, 1996.

## SLIP-SAFE U-CHANNEL SIGN SUPPORT

**SSS14**

**NUCOR**

**BAR MILL GROUP**

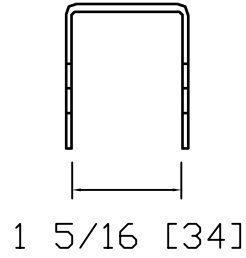
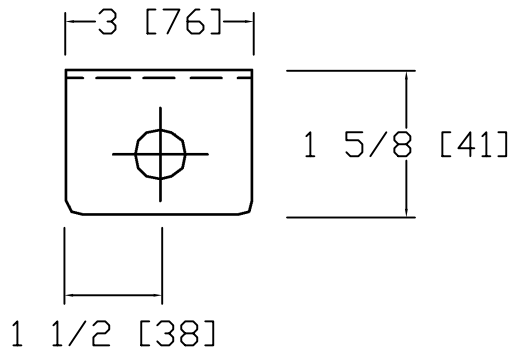
**NUCOR STEEL MARION, INC.**

SHEET NO.

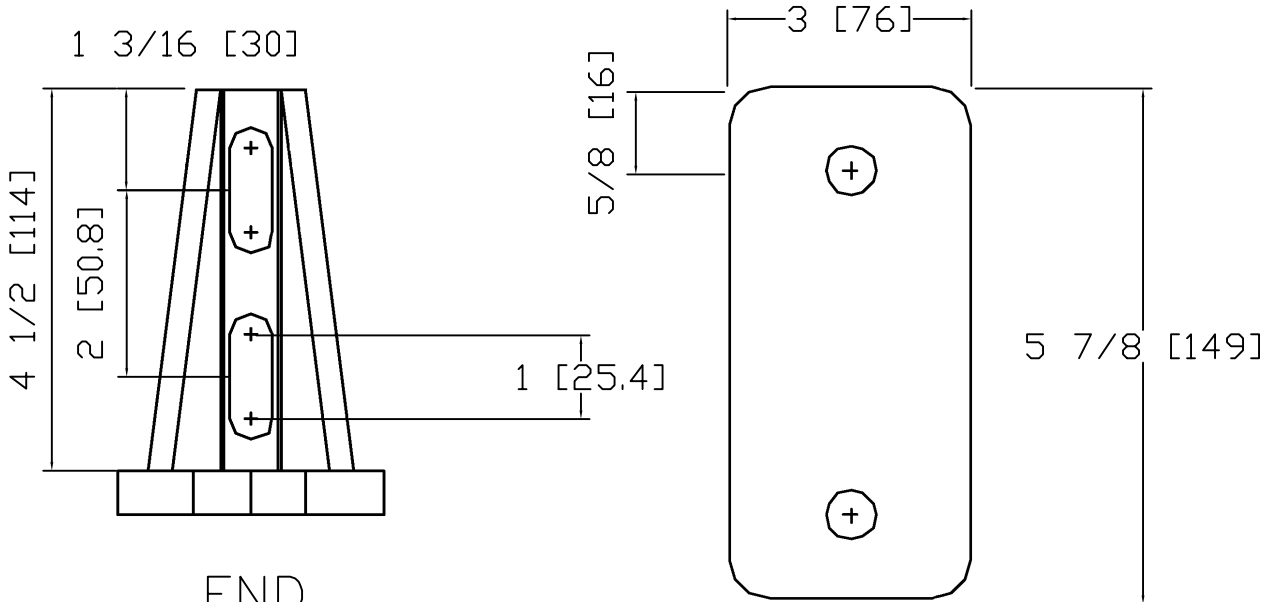
DATE

2 of 4

05/10/2007

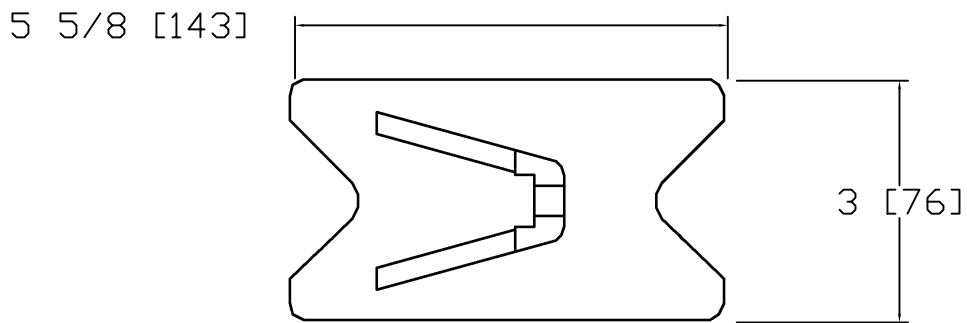


C BRACKET



END

KEEPER PLATE



TOP

SLIP-SAFE U-CHANNEL SIGN SUPPORT

**NUCOR**  
BAR MILL GROUP  
NUCOR STEEL MARION, INC.

SSS14

SHEET NO.

DATE:

3 of 4

05/02/07

**CONTACT INFORMATION**

The Nucor Steel Marion Inc., 912 Cheney Avenue, Marion, Ohio 43301-1801  
(800) 333-4011  
(740) 383-6429 Fax  
[www.nsmarion.com](http://www.nsmarion.com)

*\* All Nucor Steel Marion Inc. products are produced from 100% recycled steel.*



**SLIP-SAFE U-CHANNEL SIGN SUPPORT**

**SSS14**

**NUCOR**

**BAR MILL GROUP  
NUCOR STEEL MARION, INC.**

SHEET NO.

DATE

4 of 4

05/10/2007