

SSP14a

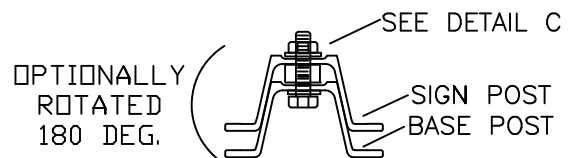
SSP14c

SIDE

FRONT

POST DESIGNATOR	POST DESIGNATOR BASE
PFP42a-b	PFP06

BI-DIRECTIONAL  
(ONE, TWO & THREE POST)



DIRECTION  
OF TRAFFIC

TOP

SSP14b Not Shown  
UNITS: IN [MM]

LAP SPLICE BREAKAWAY SYSTEM FOR CANADIAN SIGN POSTS



SSP14a-c

SHEET NO.	DATE:
1 of 4	09/12/2014

## INTENDED USE

The Lap Splice™ breakaway system can be used as a single (SSP14a), double (SSP14b) or triple post (SSP14c) sign support system within a 82 5/8 [2100] span. These systems have been successfully crash tested in both weak and strong soil and were evaluated in accordance with NCHRP Report 350 guidelines. The system meets or exceeded all of the requirements of the AASHTO *Standard Specifications for Structural Supports for Highway Signs, Luminaries and Traffic Signals*. The Lap Splice™ breakaway system is eligible for use on Federal-Aid projects.

## COMPONENTS

The Lap Splice™ breakaway system shall consist of three parts: a base post (PFP05-06), a signpost (PFP42a-b) and the splice hardware, which includes a patented threaded spacer bar. The base post shall be min. of 42 [1067] mm long and can be optionally tapered at one end. The base post must be of greater weight than the top post, the PFP06 post is recommended.

The proprietary Lap Splice™ Spacer Bar hardware consists of two Grade 9 fully threaded 5/16 x 2 [7.9 x 50.8] long plated hex head bolts, two flat washers, and two locking flange nuts (the hex bolts are identified by head markings of “L9”, as well as a red finish), one 5 [127] x 1 [25.4] x 1 1/8 [28.6] threaded spacer bar. Each spacer bar will be drilled and tapped (18 UNC). The spacer bar shall be fabricated from hot rolled carbon steel bars conforming to AASHTO M183M (ASTM A36M) or M1020. Splice hardware shall be cadmium plated in accordance with the requirements of ASTM A165 or zinc plated in accordance with the requirements of ASTM B633.

A soil stabilization plate (PLS02) is available for situations when additional soil support is needed. The plate’s primary function is providing increased stability to the base post for greater wind load carrying purposes, and increasing the integrity of the base post during vehicular impact. The soil plate is required in soft soil for triple-post installations (SSP04c) that use the PFP06 signpost and is optional in all other configurations.

## LAP-SPLICE BREAKAWAY SYSTEM FOR CANADIAN SIGN POSTS

**SSP14a-c**

SHEET NO.

DATE

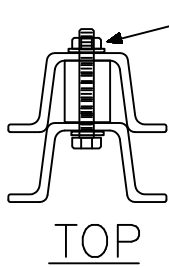
2 of 4

09/12/2014

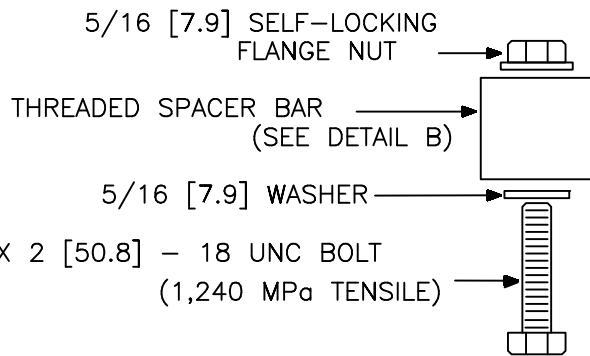
**NUCOR**

BAR MILL GROUP

NUCOR STEEL MARION, INC.

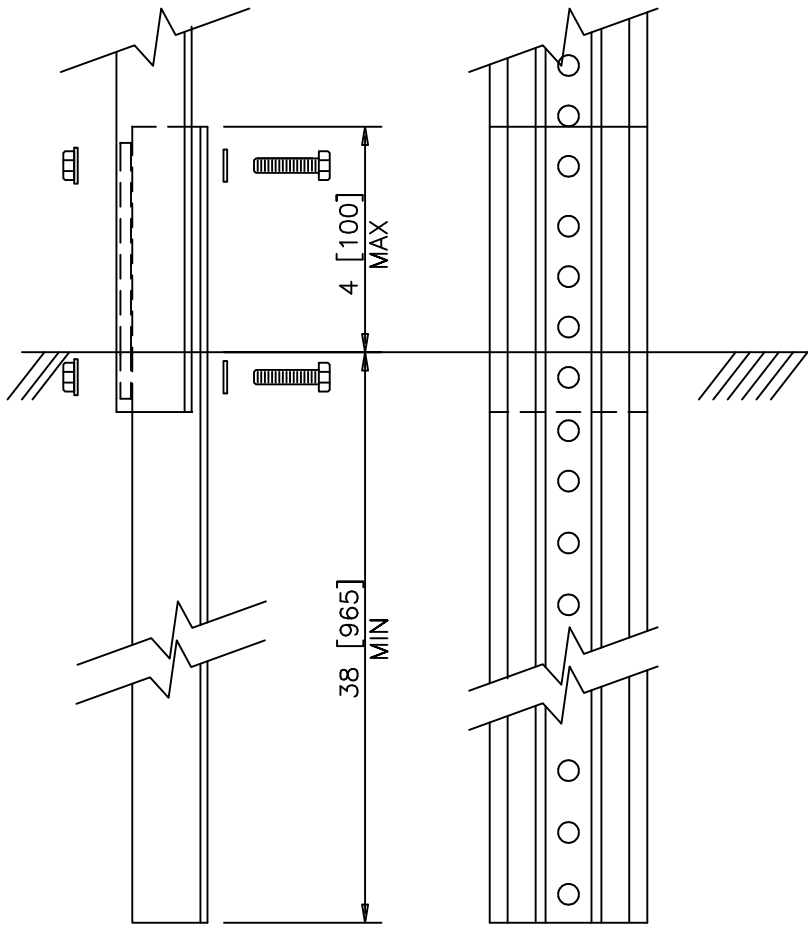


SEE DETAIL C



TOP

5/16 [7.9] X 2 [50.8] - 18 UNC BOLT  
(1,240 MPa TENSILE)



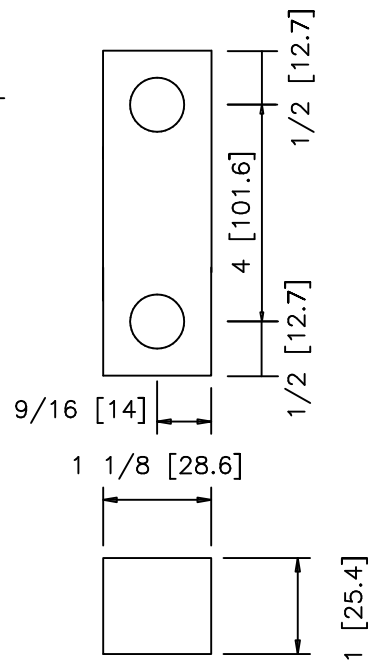
SIDE

FRONT

DETAIL A

SPLICE CONNECTION

DETAIL C  
CONNECTORS  
(PROPRIETARY)



DETAIL B

LAP SPLICE  
SPACER BAR  
(PROPRIETARY)

UNITS: IN [MM]

LAP SPLICE BREAKAWAY SYSTEM FOR CANADIAN SIGN POSTS



SSP14a-c

SHEET NO.	DATE:
3 of 4	09/12/2014

**APPROVALS**

FHWA Acceptance Letter SS-83, 07/19/1999

**CONTACT INFORMATION**

The Nucor Steel Marion Inc.,  
912 Cheney Avenue, Marion, Ohio 43301-1801  
(800) 333-4011  
(740) 383-6429 Fax  
[www.nucorhighway.com](http://www.nucorhighway.com)

*\* All Nucor Steel Marion Inc products are produced from 100% recycled steel.*



**LAP-SPLICE BREAKAWAY SYSTEM FOR CANADIAN SIGN POSTS**

**SSP14a-c**

**NUCOR**

**BAR MILL GROUP  
NUCOR STEEL MARION, INC.**

SHEET NO.

DATE

4 of 4

09/12/2014