

# STTR-1 Precrash Footage(1)



1: 23711\_02.SFW



2: 23711\_03.SFW



3: 23711\_04.SFW



4: 23711\_05.SFW



5: 23711\_06.SFW



6: 23711\_07.SFW



7: 23711\_08.SFW



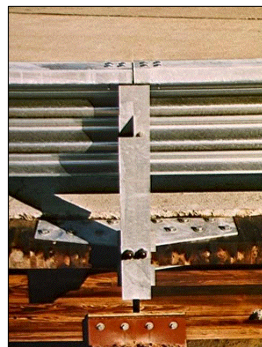
8: 23711\_09.SFW



9: 23711\_10.SFW



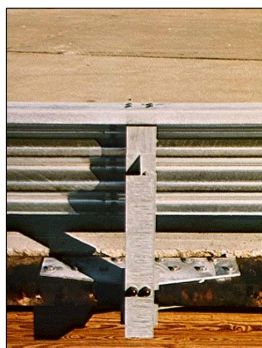
10: 23711\_11.SFW



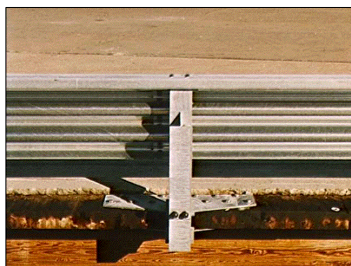
11: 23711\_12.SFW



12: 23711\_13.SFW



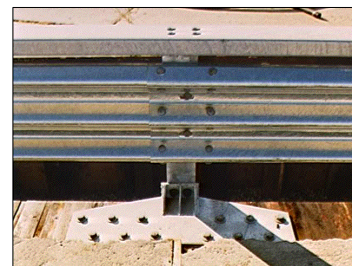
13: 23711\_14.SFW



14: 23711\_15.SFW



15: 23711\_16.SFW



16: 23711\_17.SFW



17: 23711\_18.SFW



18: 23711\_19.SFW



19: 23711\_20.SFW

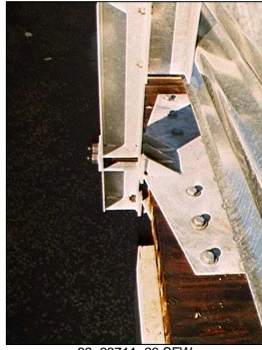


20: 23711\_21.SFW

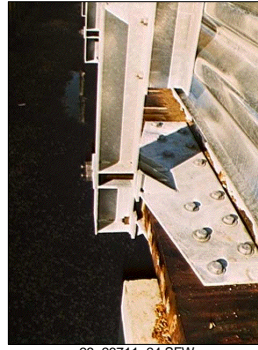
# STTR-1 Precrash Footage(1)



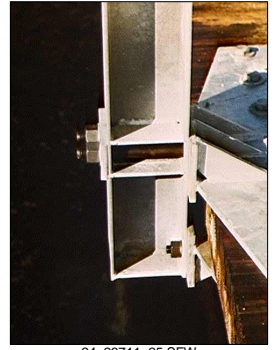
21: 23711\_22.SFW



22: 23711\_23.SFW



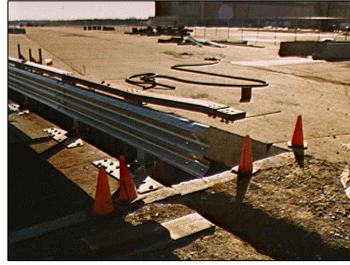
23: 23711\_24.SFW



24: 23711\_25.SFW



25: 23711\_26.SFW



26: 23711\_27.SFW



27: 23711\_28.SFW



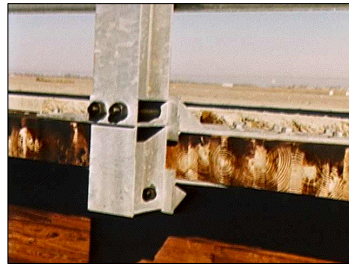
28: 23711\_29.SFW



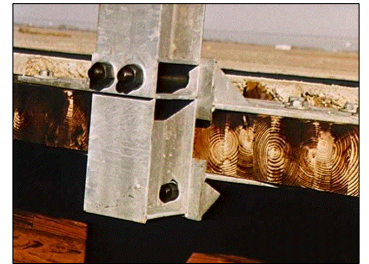
29: 23711\_30.SFW



30: 23711\_31.SFW



31: 23711\_32.SFW



32: 23711\_33.SFW



33: 23711\_35.SFW



34: 23711\_36.SFW



35: 23711\_37.SFW