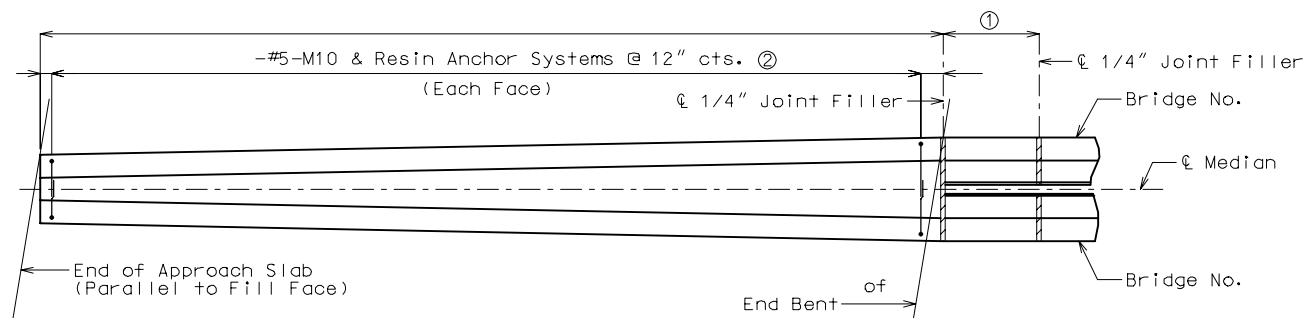


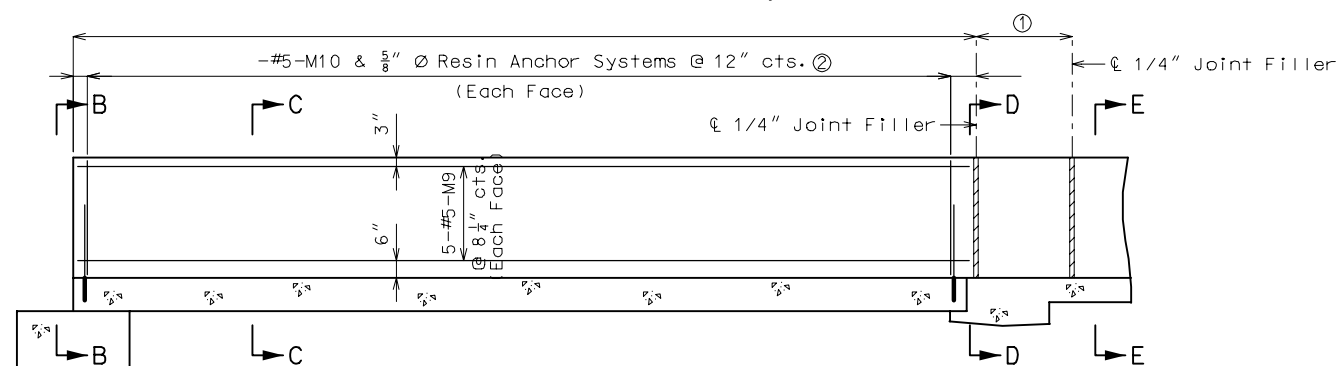
State	Proj. No.	Sheet No.
MO		

Note to Detailer:

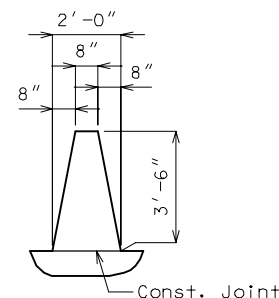
- ① 5'-0"±, consult SPM.
- ② Resin Anchor System Option for existing approach slab only, consult SPM if it is a new construction.



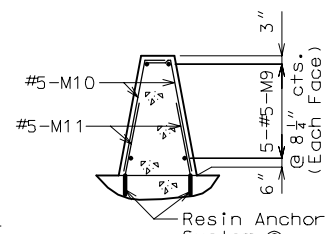
PLAN OF TRANSITION ON APPROACH SLAB
Note: M9 bars not shown for clarity.



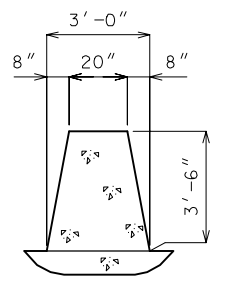
ELEVATION OF TRANSITION ON APPROACH SLAB



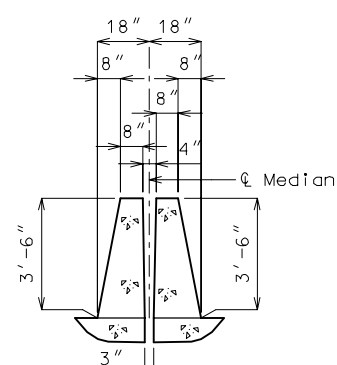
ELEVATION B-B



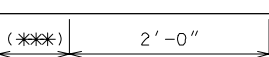
SECTION C-C



SECTION D-D



SECTION E-E

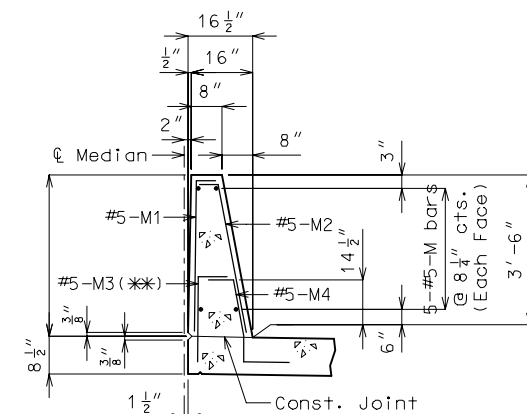


#5-M11
(required)

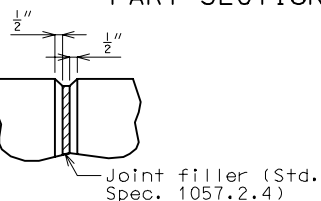
(***) Manufacture embedment length.

Note: Measurement of Median Barrier Curb Transition (Type C) is to the nearest linear foot measured along the top of slab at Median from Median to Sleeper Slab to

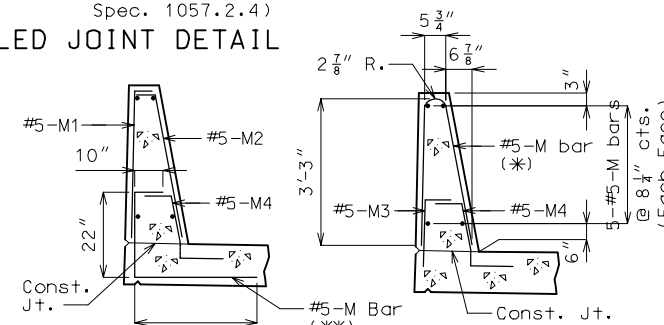
MEDIAN BARRIER CURB TRANSITION (TYPE C)



PART SECTION A-A



FILLED JOINT DETAIL



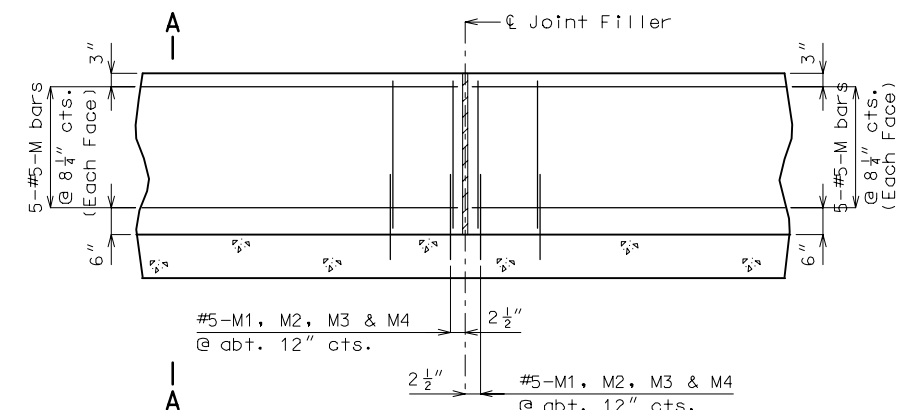
M-BAR PERMISSIBLE ALTERNATE SHAPE

Note: Use a minimum lap of 2'-11" for #5 horizontal Safety Barrier Curb (Type C) bars. The cross-sectional area above the slab = 3.55 sq. ft.

(*) The M1 and M2 bar combination may be furnished as one bar, as shown, at the contractor's option. (All dimensions are out to out.)

(**) The M3 bar and #5 bottom transverse slab bar in cantilever (P/S panels only) combination may be furnished as one bar as shown, at the contractor's option.

SAFETY BARRIER CURB (TYPE C)



PART ELEVATION (CAST-IN-PLACE CONVENTIONAL FORMING OPTION)

Notes:

The contractor shall use one of the resin anchor systems listed in the job special provisions. These anchor systems shall be installed according to the manufacturer's specifications, except as modified by the job special provisions.②

Cost of furnishing and installing the anchor system complete in place shall be included in the price bid for Median Barrier Curb Transition (Type C). ②

The 5/8" diameter resin anchor systems shall have a minimum ultimate pullout strength of 15,500 pounds in concrete with f'c = 4000 psi, see Special Provisions.

An epoxy coated #5-M11 Grade 60 reinforcing bar shall be substituted for the 5/8" Ø threaded rod stud.

The #5-M11 Bar shall be field bent.

Top of Safety Barrier Curb (Type C) and Median Barrier Curb Transition (Type C) shall be built parallel to grade with Safety Barrier Curb joints (except at end bents) normal to grade.

All exposed edges of Safety Barrier Curb (Type C) and Median Barrier Curb Transition (Type C) shall have either a 1/2" radius or a 3/8" bevel, unless otherwise noted.

When the Safety Barrier Curb (Type C) or Median Barrier Curb Transition is bid by linear feet, the contract unit price shall include the cost of all concrete and reinforcement, complete in place.

Concrete in the Safety Barrier Curb (Type C) and Median Barrier Curb Transition (Type C) shall be Class B-1 with f'c = 4,000 psi.

Measurement of Safety barrier curb (Type C) is to the nearest linear foot for each structure, measured along the outside top of slab from fill face to fill face.