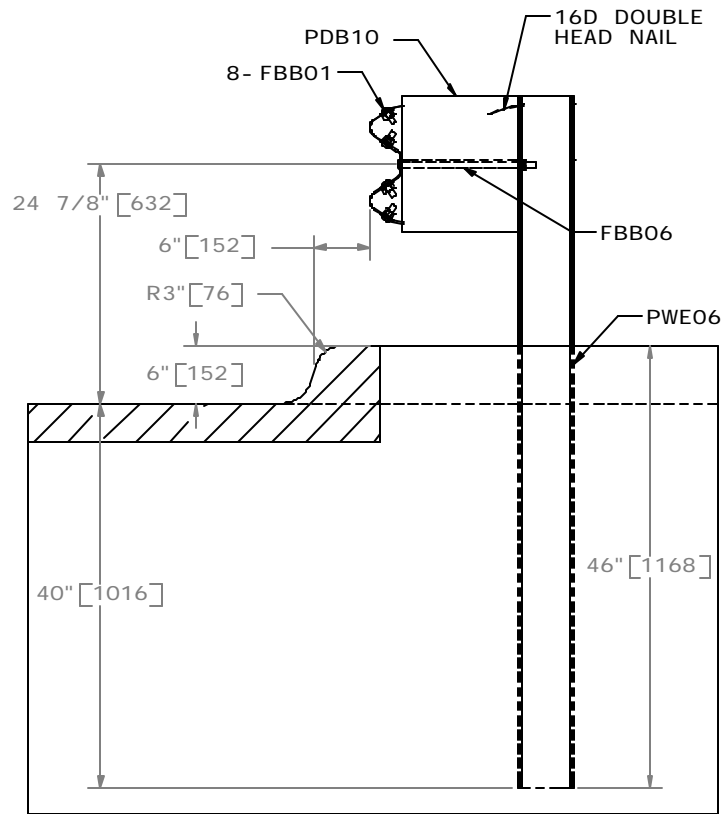
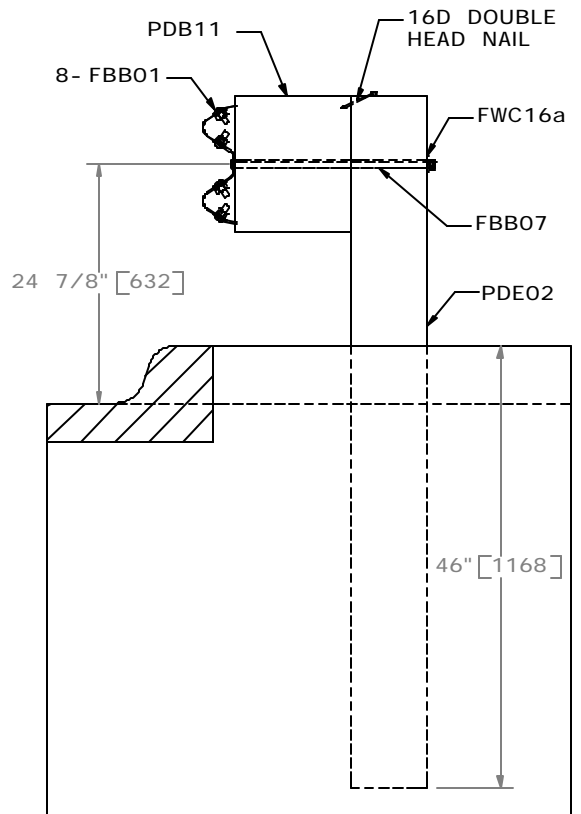


ELEVATION



**SGR23a
SECTION A- A**



SGR23b

MIDWEST GUARDRAIL SYSTEM WITH 6" [152] CURB



SGR23a-b

SHEET NO.	DATE:
1 of 2	04/12/2006

INTENDED USE

Midwest Guardrail System (MGS) for use with a 6" [152] tall, AASHTO Type B curb should be used in locations where a maximum dynamic deflection of 40" [1024] or less is acceptable and where a working width of 57" [1453] is provided. The maximum distance that the midpoint of the front face of the curb can be placed in front of the front face of the guardrail is 6" [152]. In addition, the back face of the curb can be positioned such that it is adjacent to the front face of the guardrail post. MGS should be anchored and terminated using a suitable guardrail end treatment that is approved with a 31" [787] top mounting height. MGS can be used with wide-flange steel posts (PWE06) or timber posts (PDE02).

COMPONENTS

Unit Length = 12'- 6" [3810]

DESIGNATOR	COMPONENT	SYSTEM	NUMBER
FBB01	Guardrail splice bolts and nuts	a- b	8
FBB06	Guardrail post bolts and nuts	a	2
FBB07	Guardrail post bolts and nuts	b	2
FWC16a	Round washer	b	2
PDB10	MGS timber blockout	a	2
PDB11	W- beam timber blockout	b	2
PDE02	Timber guardrail post	b	2
PWE06	Wide-flange guardrail post	a	2
RWM04	W- beam Rail	a- b	1
-----	16D double head nail	a- b	2

APPROVAL

FHWA Approval Letter [B- 133](#), March 1, 2005.

REFERENCES

Polivka, K.A., Faller, R.K., Sicking, D.L., Reid, J.D., Rohde, J.R., Holloway, J.C., Bielenberg, R.W., and Kuipers, B.D., Development of the Midwest Guardrail System (MGS) for Standard and Reduced Post Spacing and in Combination with Curbs, Final Report to the Midwest State's Regional Pooled Fund Program, Transportation Research Report No. TRP- 03- 139- 04, Project No. SPR- 3(017)- Years 10, and 12- 13, Project Code: RFPF- 00- 02, 02- 01, and 03- 05, Midwest Roadside Safety Facility, University of Nebraska- Lincoln, September 1, 2004.

Faller, R.K., Polivka, K.A., Kuipers, B.D., Bielenberg, B.W., Reid, J.D., Rohde, J.R., and Sicking, D.L., *Midwest Guardrail System for Standard and Special Applications*, Paper No. 04- 4778, Transportation Research Record No. 1890, Transportation Research Board, National Research Council Washington, D.C., January 2004, pp. 19- 33.

Sicking, D.L., Reid, J.D. and Rohde, J.R., *Development of the Guardrail System*, Transportation Research Record No. 1797, Transportation Research Board, National Research Council, Washington, D.C., November 2002, pp. 44- 52.

CONTACT INFORMATION

Midwest Roadside Safety Facility
E527 Nebraska Hall
Lincoln, NE 68588- 0529
(402) 472- 0965
Email: mwrfsf@unl.edu
Website: <http://mwrfsf.unl.edu/>



MIDWEST GUARDRAIL SYSTEM WITH 6" [152] CURB

SGR23a-b



SHEET NO.

DATE:

2 of 2

04/12/2006