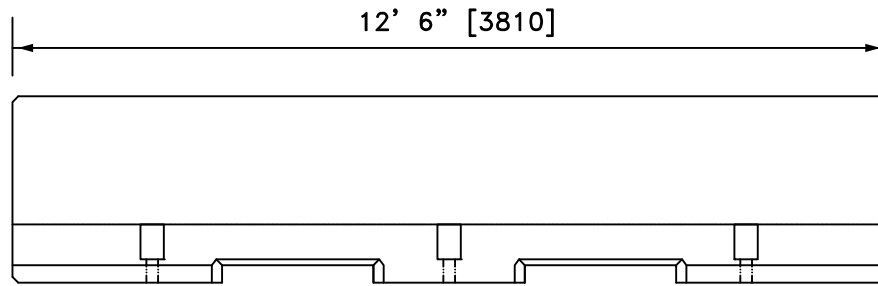


PLAN VIEW

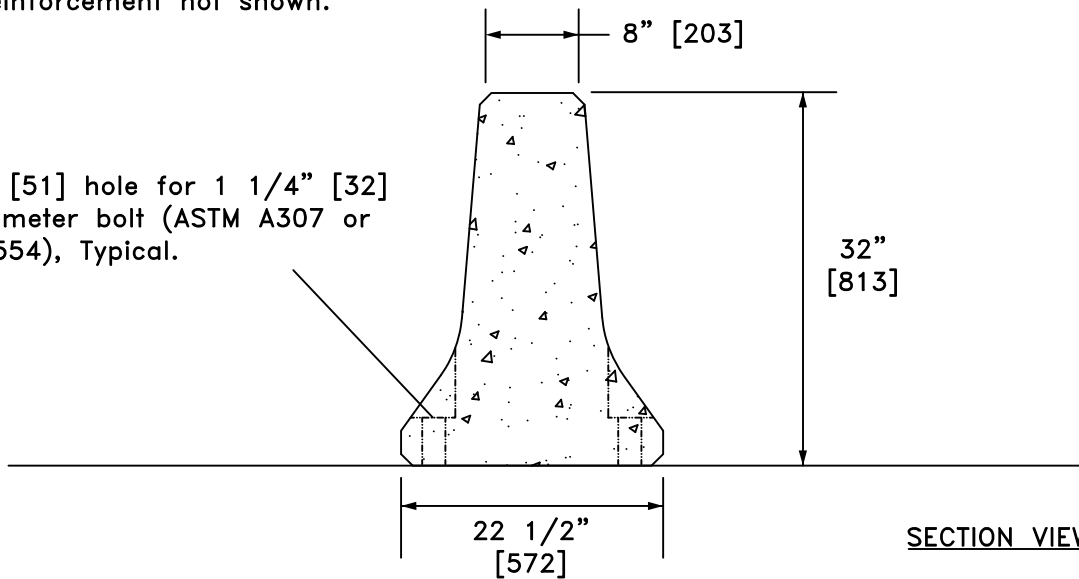


ELEVATION VIEW

**NOTES:**

1. End connections and steel reinforcement not shown.

2" [51] hole for 1 1/4" [32] diameter bolt (ASTM A307 or F1554), Typical.



SECTION VIEW

FLORIDA DOT TEMPORARY CONCRETE BARRIER



SWC14

SHEET NO.

DATE:

1 of 2

10/31/2013

## INTENDED USE

The Florida DOT Temporary Concrete Barrier (Type K) is intended for work zone traffic control and other temporary applications. Except for Back Filled Roadway Installations, the Barrier Units must be installed on a flexible pavement (asphalt) or rigid pavement (concrete) surface with a cross slope of 1:10 or flatter. Except for transition installations, Type K Barrier Units are not intended to be bolted down or staked down in locations where they can be impacted from the back side.

The barrier is 32 in. [813mm] high, 8 in. [203mm] at the top, and 22.5 in. [572mm] wide at the base. The barrier is a New Jersey profile concrete barrier composed of 12'-6" [3810mm] sections. 1 1/4" [32mm] anchor rods pass through a 2" [51mm] diameter hole fabricated into the barrier wall, and are either through-bolted (ASTM A307 or ASTM F1554 Grade 36) or adhesive bonded (ASTM A307 Grade 36).

Standard construction drawings and specifications are available upon request.

SWC14 is accepted in accordance with NCHRP Report 350, Test Level 3 (TL-3).

## APPROVALS

### CONTACT INFORMATION

Florida Department of Transportation  
605 Suwannee Street, MS 32  
Tallahassee, FL 32399-0450  
<http://www.dot.state.fl.us/>

## FLORIDA DOT TEMPORARY CONCRETE BARRIER

# SWC14

SHEET NO.	DATE
2 of 2	10/31/2013

