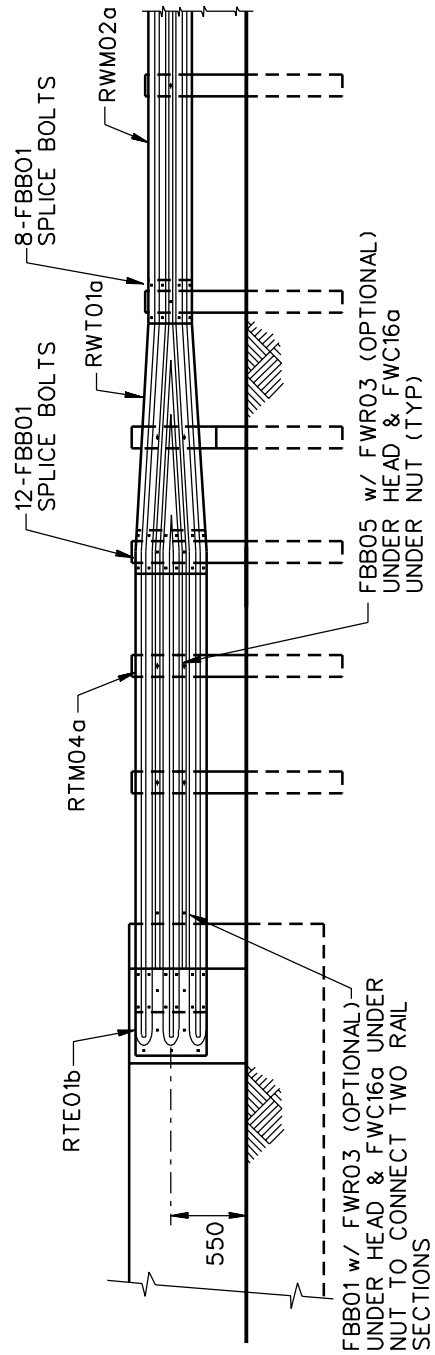


PLAN



ELEVATION

1994

NESTED THRIE-BEAM TO VERTICAL WALL TRANSITION

STB05

SHEET NO.

REF. NO.

1 of 4

INTENDED USE

This system can be used as a transition between any SGR04a-b or SGR09a-c guardrail and a vertical concrete bridge parapet. This design features a nested thrie-beam approach rail. This system is shown in figure 4 in the 1988 FHWA Technical Advisory on crash tested guardrail-to-bridge railings transitions. This transition should only be used with bridge railings that are over 810-mm tall to prevent the top of the guardrail protruding above the bridge rail.

COMPONENTS

Unit Length = 7620

Designator	Component	Number
FBB01	Guardrail splice bolts and nuts	34
FBB05	Guardrail bolt and nut	10
FBX22b	High-strength hex bolt (450 mm) and nut	5
FPB07	Terminal connector bearing plate	1
FWR03	Rectangular washer (optional)	10
PDB01	Timber blockout	2
PDB02	Timber blockout	4
PDE05	Timber guardrail posts	4
PDE07	Timber guardrail posts	2
RTE01b	Thrie-beam terminal connector	1
RTM04a	4-space thrie beam rail	2
RWM02a	2-space w-beam rail	1
RWT01a	W-thrie transition element	1

REFERENCES

FHWA, *Guardrail-Bridge Rail Transitions*, Federal Highway Administration Technical Advisory T 5040.26, January 28, 1988.

M.E. Bronstad, L.R. Calcote, M.H. Ray, and J.B. Mayer Jr., *Guardrail-Bridge Rail Transition Designs*, Federal Highway Administration, Report FHWA-RD-86-178, Washington, D.C., 1988.

NESTED THRIE-BEAM TO VERTICAL WALL TRANSITION

STB05

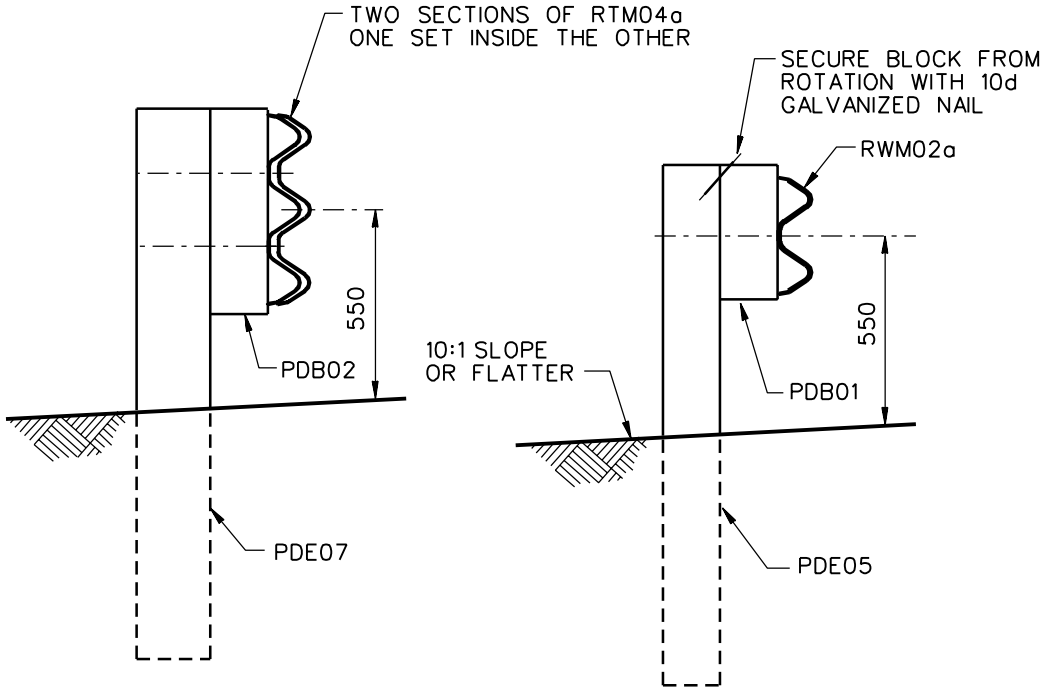
SHEET NO.

DATE

2 of 4

03-05-06





SECTION A-A

SECTION B-B

1994

NESTED THRIE-BEAM TO VERTICAL WALL TRANSITION

STB05

SHEET NO.	REF. NO.
-----------	----------

3 of 4

Page intentionally left blank

NESTED THRIE-BEAM TO VERTICAL WALL TRANSITION

STB05

SHEET NO.

DATE

4 of 4

03-05-06

