

NCIAS COVER FABRICATION SPECIFICATIONS

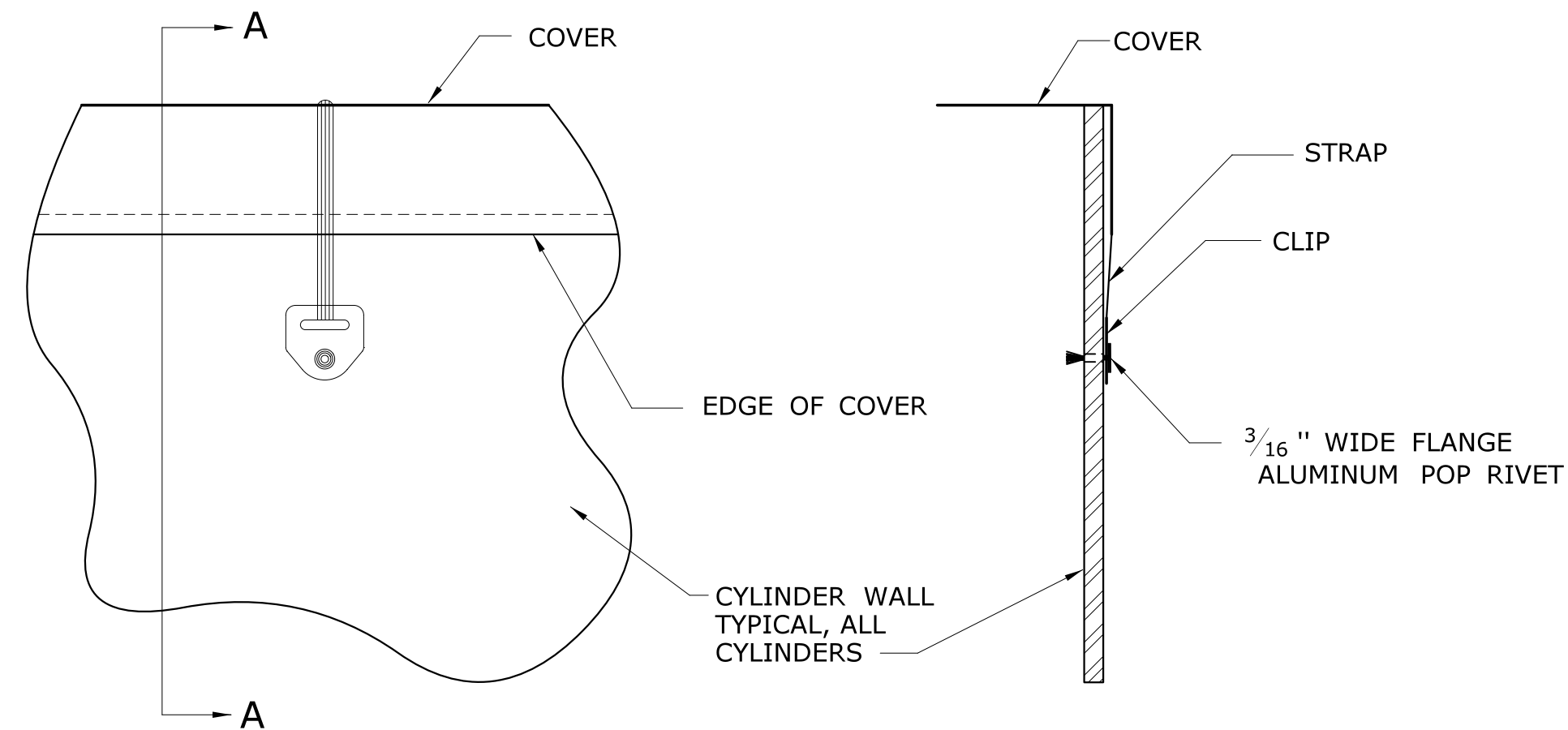
FABRIC: THE NCIAS COVER SHALL BE FABRICATED FROM VINYL - COATED POLYESTER FABRIC CONFORMING TO THE FOLLOWING MINIMUM REQUIREMENTS : BASE FABRIC WEIGHT = 6.0 OZ/SY ; TOTAL FABRIC WEIGHT = 22.0 OZ/SY; TONGUE TEAR (METHOD 5134) = 150 LB; GRAB TENSILE (METHOD 5100) = 500/400 LB; STRIP TENSILE (METHOD 5102) = 400/300 LB/IN.; HYDROSTATIC RESISTENCE (METHOD 5512) = 500 PSI.; COLOR BLACK. A SAMPLE OF THE PROPOSED FABRIC SHALL BE SUBMITTED FOR APPROVAL PRIOR TO ITS USE FOR THE NCIAS COVER.

STRAPS: THE NCIAS COVER STRAPS SHALL BE PLACED AND SEWN TO THE COVER FABRIC IN THE CONFIGURATION SHOWN. THE STRAPS SHALL BE FABRICATED FROM 2" - WIDE BLACK SEAT-BELT MATERIAL, WITH A MINIMUM TOTAL TENSILE STRENGTH OF 5000 LB. STRAP LOCATION DIMENSIONS SHOWN ARE TO THE STRAP CENTERLINES.

THREADS: THE STRAPS SHALL BE SECURELY FASTENED TO THE COVER FABRIC WITH BLACK OR NATURAL COLOR, SIZE EE NYLON THREAD.

STITCHING: SHALL BE FULL LENGTH OF ALL STRAPS AND IN CONFORMANCE WITH THE CONFIGURATION SHOWN BELOW. VERTICAL STITCHING SHALL BE USED THROUGHOUT THE NCIAS COVER WITH SIZE OF 6 PER INCH. ALL LOOSE THREAD ENDS SHALL BE SECURELY TIED TO PREVENT RAVELING.

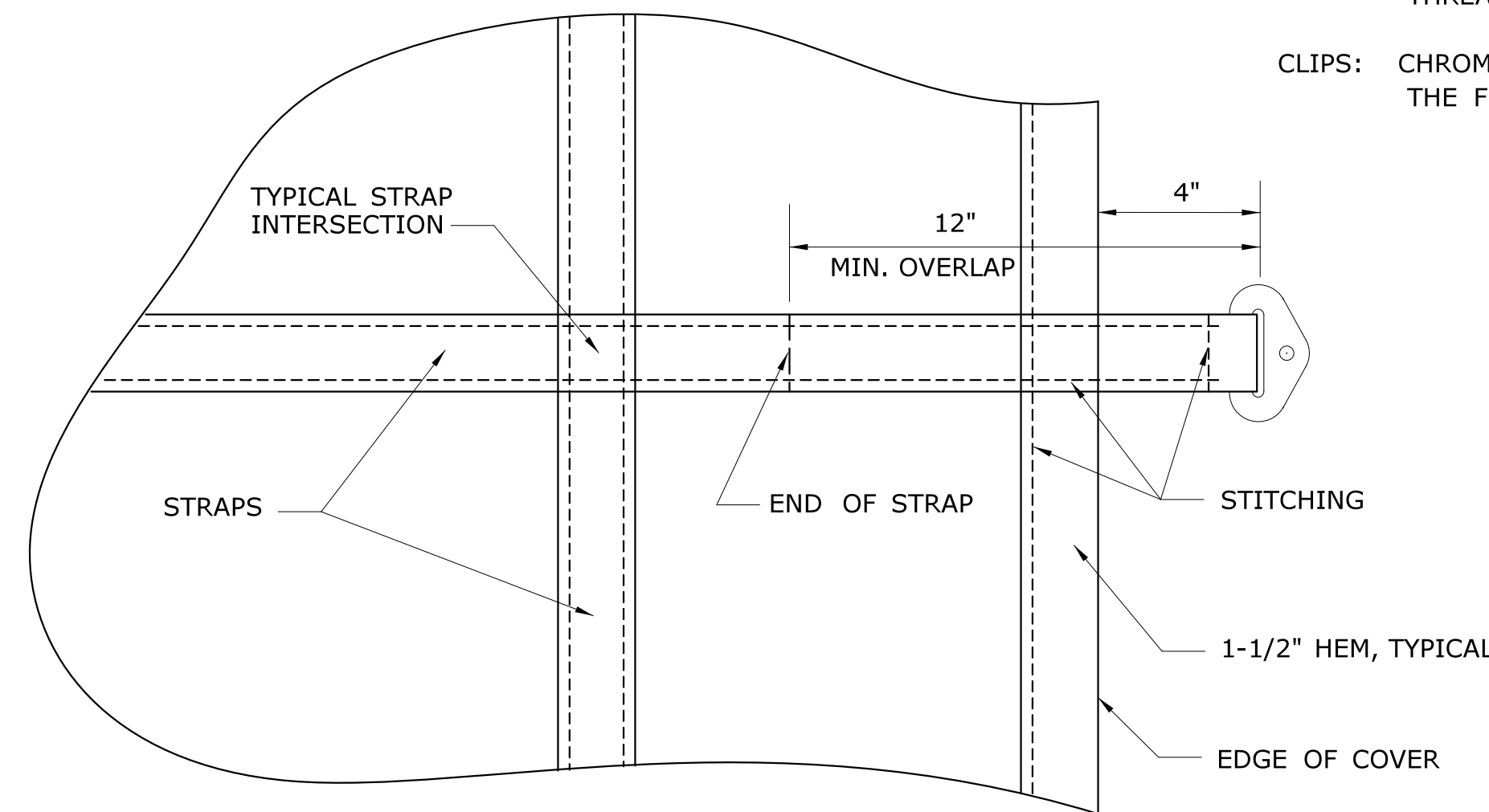
CLIPS: CHROME - PLATED STEEL CLIPS CONFORMING TO THE CONFIGURATION SHOWN BELOW SHALL BE FASTENED TO THE FREE END OF EACH STRAP. EACH CLIP SHALL HAVE A 2" SLOT AND 5/16" HOLE AS SHOWN.



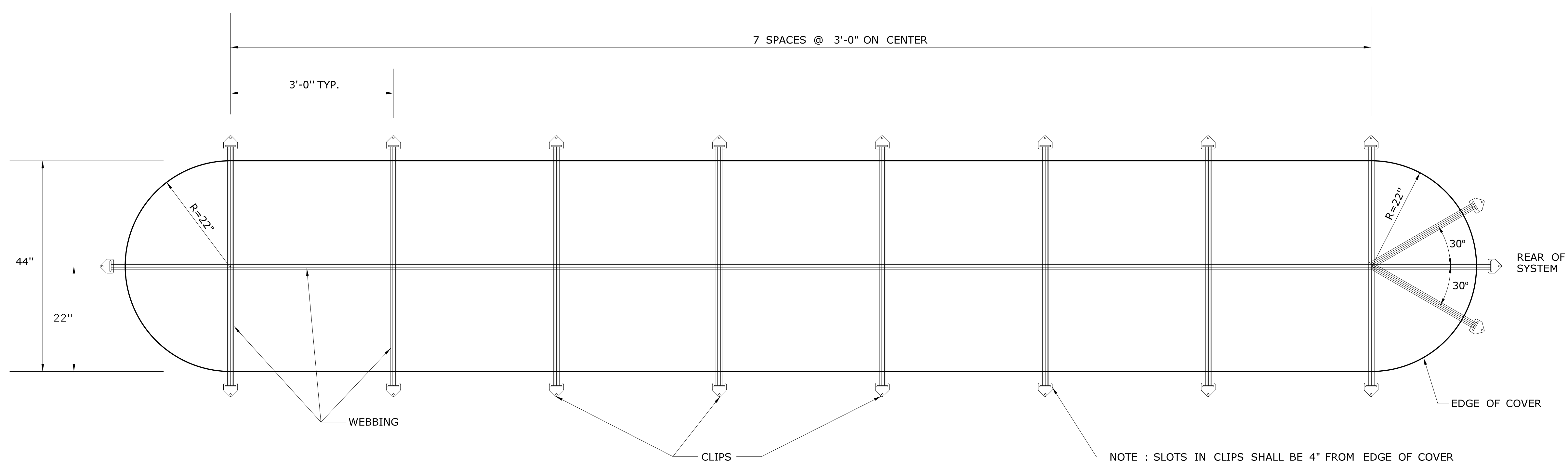
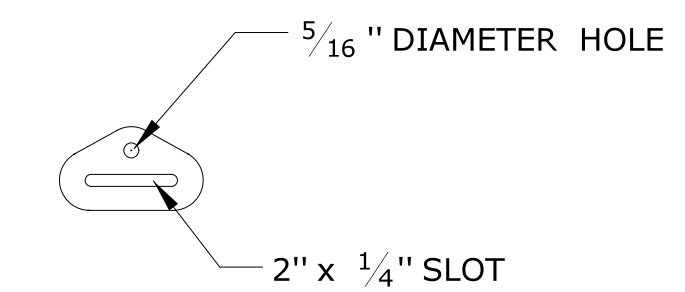
NOTE : RIVOT HOLES SHALL BE PLACED SUCH THAT THE COVER IS TAUT THROUGHOUT THE NCIAS.

NOTE : THE THREE REAR - MOST COVER CLIPS SHALL BE BOLTED (NOT RIVOTED) TO CYLINDER 8 USING 5/16" x 1" ALUMINUM BOLTS, NUTS, AND WASHERS. ALL OTHER CLIPS SHALL BE RIVOTED TO THE CYLINDER WALLS AS SHOWN.

COVER ATTACHMENT TO CYLINDERS



TYPICAL COVER SECTION



NOTE : SLOTS IN CLIPS SHALL BE 4" FROM EDGE OF COVER

Revised 5/14/08

REV. DATE	REVISION DESCRIPTION	SHEET NO.	Plotted Date: 7/17/2013	DESIGNER/DRAFTER:	<p>STATE OF CONNECTICUT DEPARTMENT OF TRANSPORTATION</p>	SIGNATURE/BLOCK:	PROJECT TITLE:	TOWN:	PROJECT NO.:
				CHECKED BY:		<p>OFFICE OF ENGINEERING</p>		DATE:	<p>-</p>
				SCALE AS NOTED	Filename: ...Wclas5_2008.dgn	DRAWING TITLE:			DRAWING NO.:
						<p>MISCELLANEOUS CONNECTICUT DETAIL NCIAS COVER DETAILS</p>			<p>1804-B5</p>
									SHEET NO.:
									<p>\$\$\$</p>