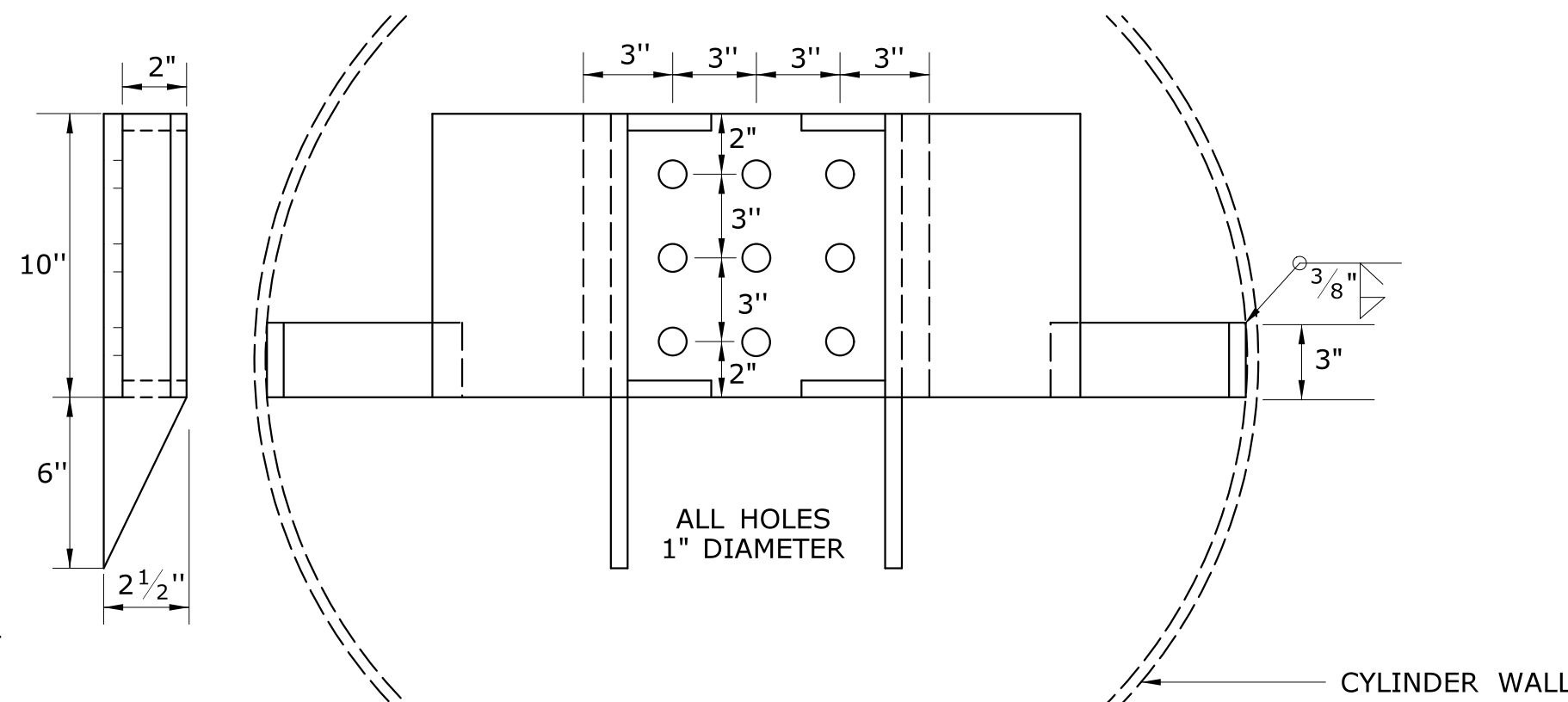
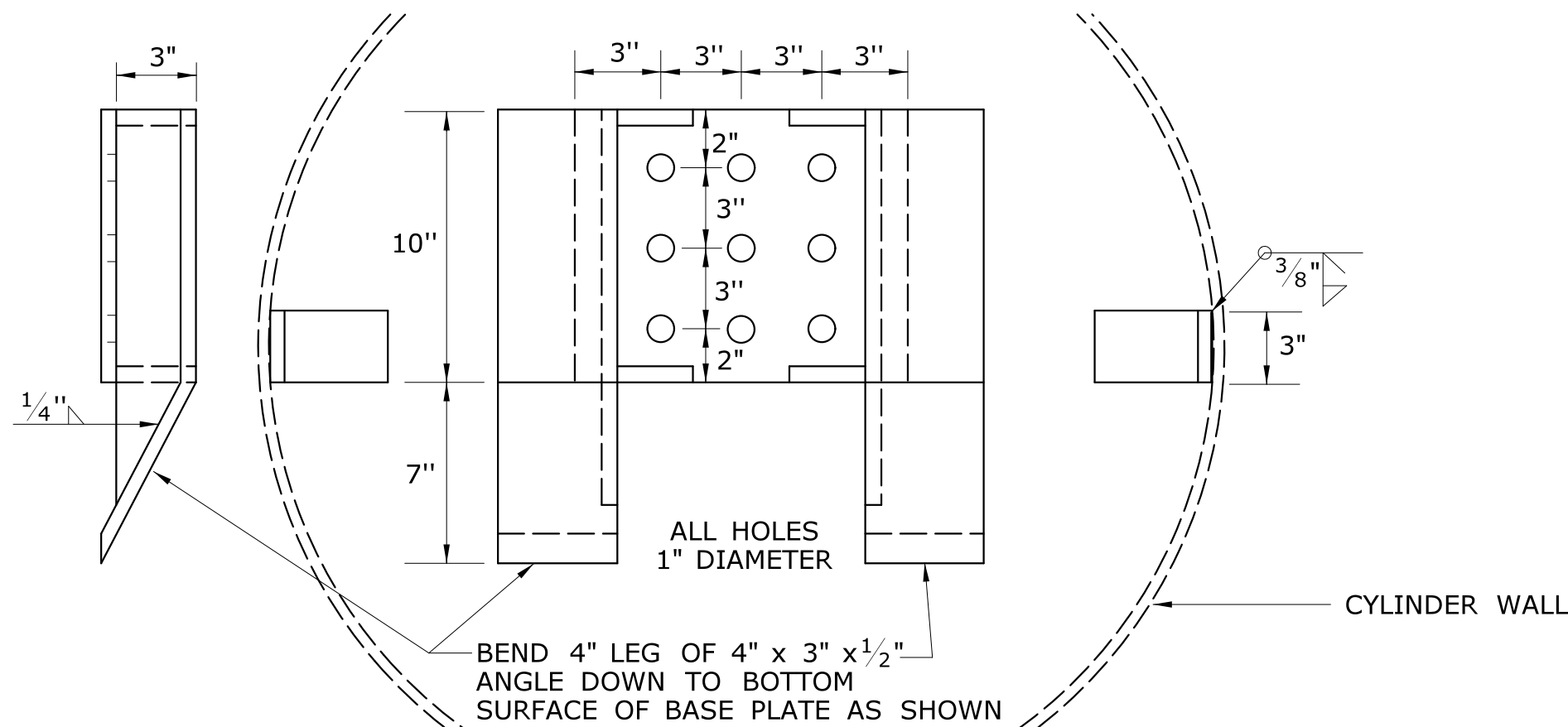
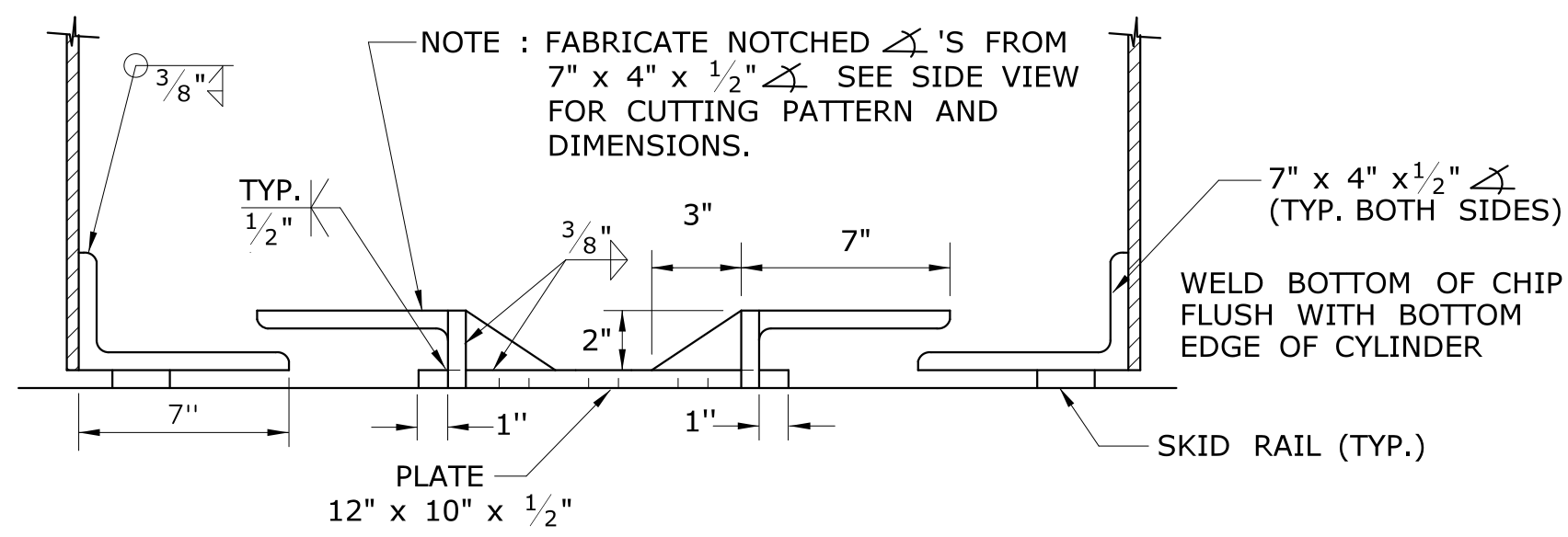
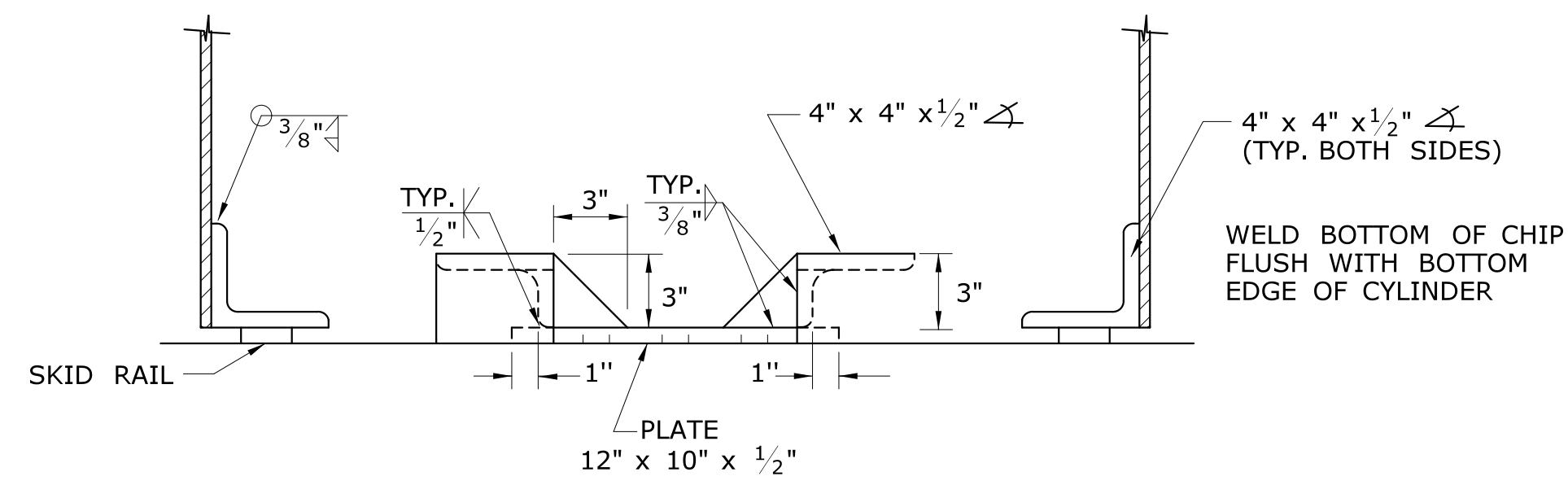


GENERAL NOTES:

LATERAL DEFLECTION RETAINERS POSITIONED ON THE CONCRETE BASE PAD AND INSIDE CYLINDERS 5 THROUGH 7 SHALL BE PROVIDED. ALL RETAINERS SHALL BE FABRICATED FROM 1/2" PLATE AND STANDARD STRUCTURAL ANGLE SECTIONS, AND SHALL CONFORM TO THE DIMENSIONS SHOWN HERE. ALL REINFORCING GUSSETS (FOUR (4) PER RETAINER) SHALL BE 1/2" THICK. THE EXTREME FRONT EDGES OF THE RETAINERS SHALL BE FLUSH WITH THE BOTTOMS OF THE RETAINER BASE PLATES. ALL RETAINER ANCHOR BOLT HOLES SHALL BE 1" - DIAMETER AND LOCATED AS SHOWN. RETAINER CLIPS SHALL BE WELDED TO THE INSIDES OF CYLINDERS 5 THROUGH 7.

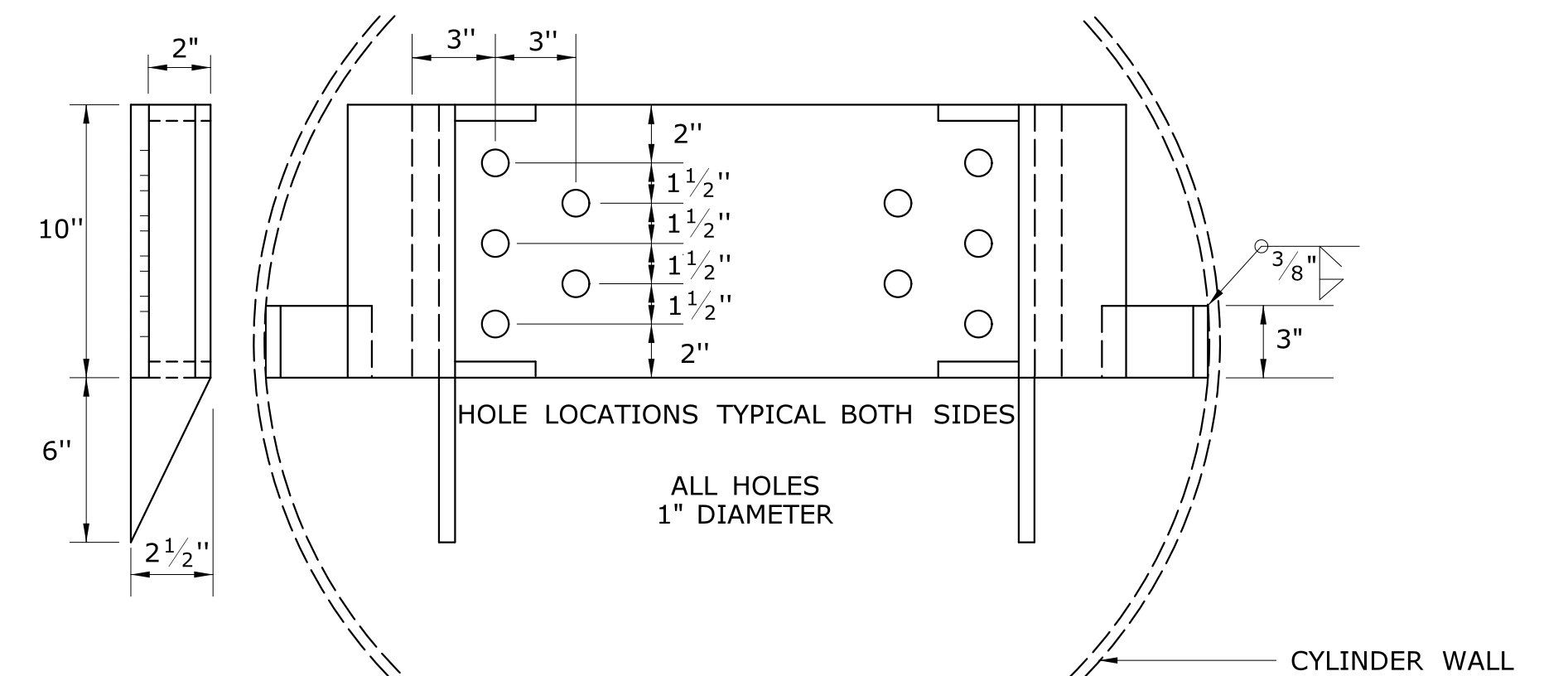
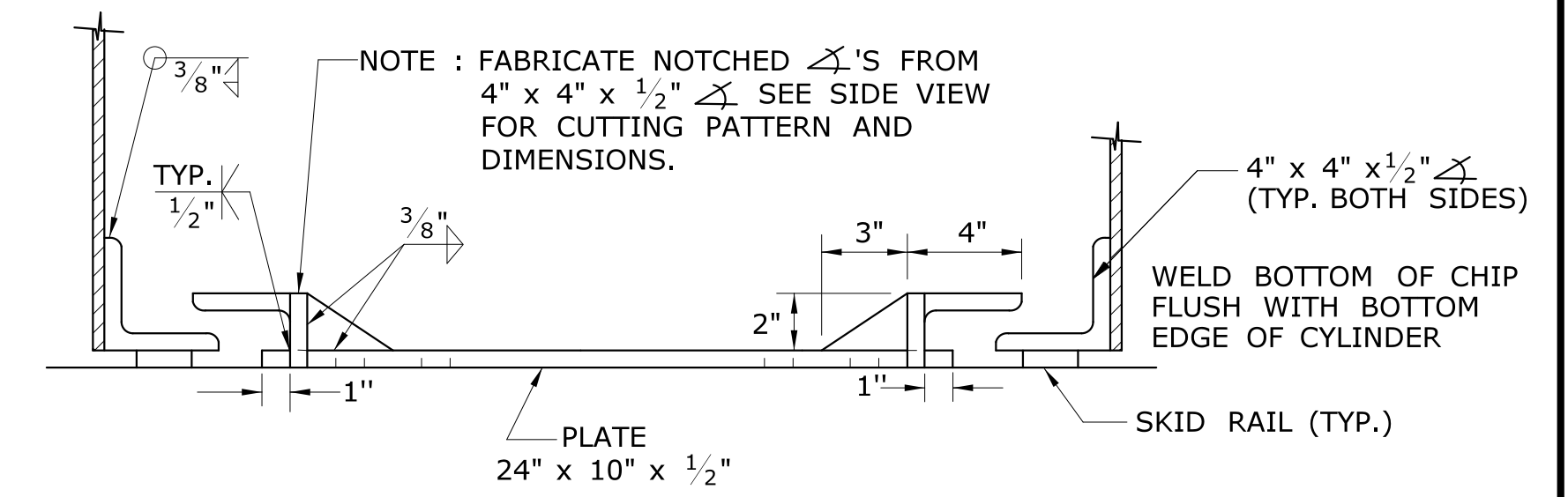
TWO (2) FRONT ANCHOR PLATES SHALL BE PROVIDED WITH EACH NCIAS UNIT. EACH FRONT ANCHOR PLATE ASSEMBLY SHALL HAVE A SOLID 2" - DIAMETER ANCHOR PIN HAVING DRILLED HOLES TO ACCEPT 1/8" COTTER PINS. THE COTTER PIN HOLES SHALL BE DRILLED SUCH THAT THE ANCHOR PIN IS FIRMLY RETAINED WITHIN THE ANCHOR PLATE. THE FRONT EDGE OF EACH FRONT ANCHOR PLATE SHALL HAVE 3/4" BEVEL AS SHOWN.

TWO (2) 2 - 1/2" x 23'-6" LONG SKID RAILS SHALL BE PROVIDED WITH EACH NCIAS UNIT. ONE END OF EACH RAIL SHALL HAVE A SLOT AND THE OTHER A HOLE AS SHOWN.

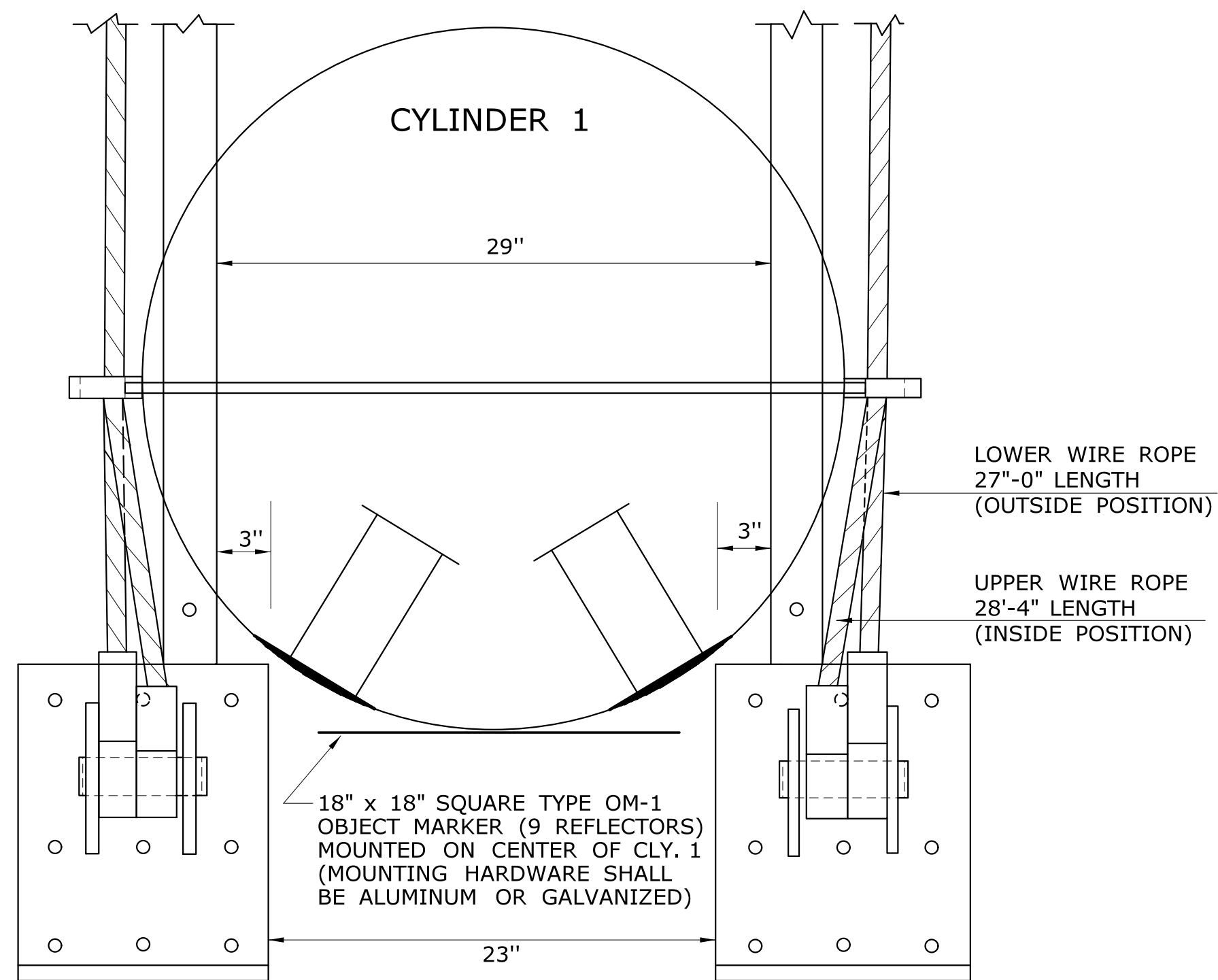


CYLINDER 5 RETAINER PLATE
(GALVANIZED)

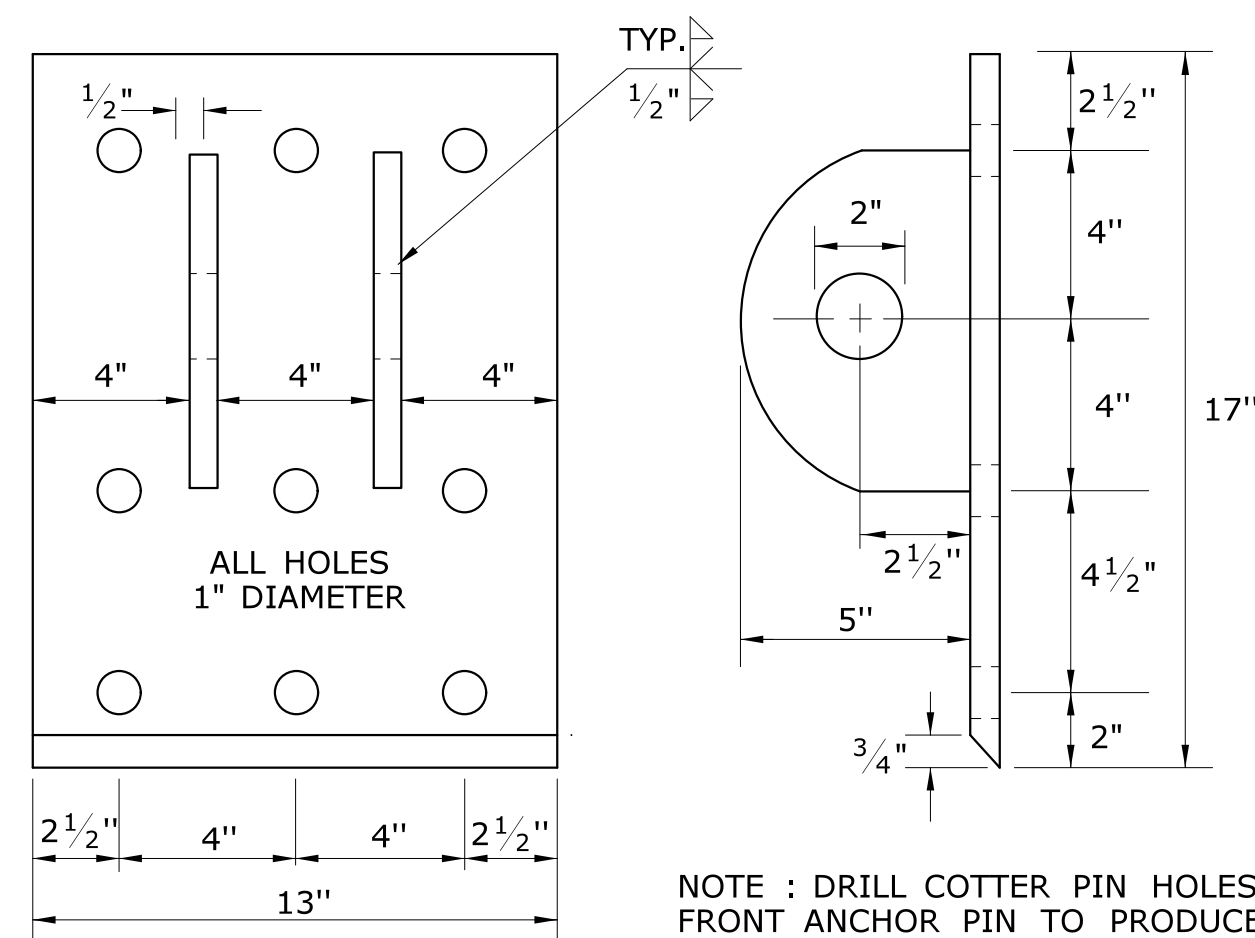
CYLINDER 6 RETAINER PLATE
(GALVANIZED)



CYLINDER 7 RETAINER PLATE
(GALVANIZED)

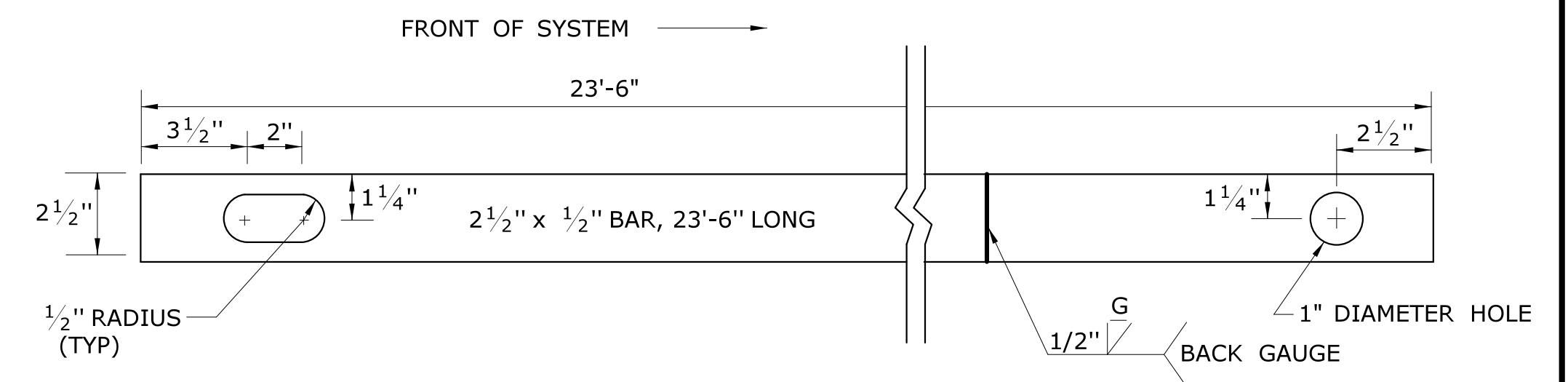


FRONT DETAIL



FRONT ANCHOR PLATE ASSEMBLY

(2 REQUIRED, GALVANIZED)



SKID RAIL

(2 REQUIRED, GALVANIZED)

Revised 5/14/08

REV.	DATE	REVISION DESCRIPTION	SHEET NO.	Plotted Date: 7/17/2013	DESIGNER/DRAFTER:	STATE OF CONNECTICUT DEPARTMENT OF TRANSPORTATION	SIGNATURE/ BLOCK:	OFFICE OF ENGINEERING	PROJECT TITLE:	TOWN:	PROJECT NO.
					CHECKED BY:	FILENAME: ...\\vclas3_2008.dgn	APPROVED BY:	DATE:			
					SCALE AS NOTED						
DRAWING TITLE: MISCELLANEOUS CONNECTICUT DETAIL NCIAS BASE COMPONENT DETAILS											
DRAFTING NO.: 1804-B3											
SHEET NO.: \$\$\$											