

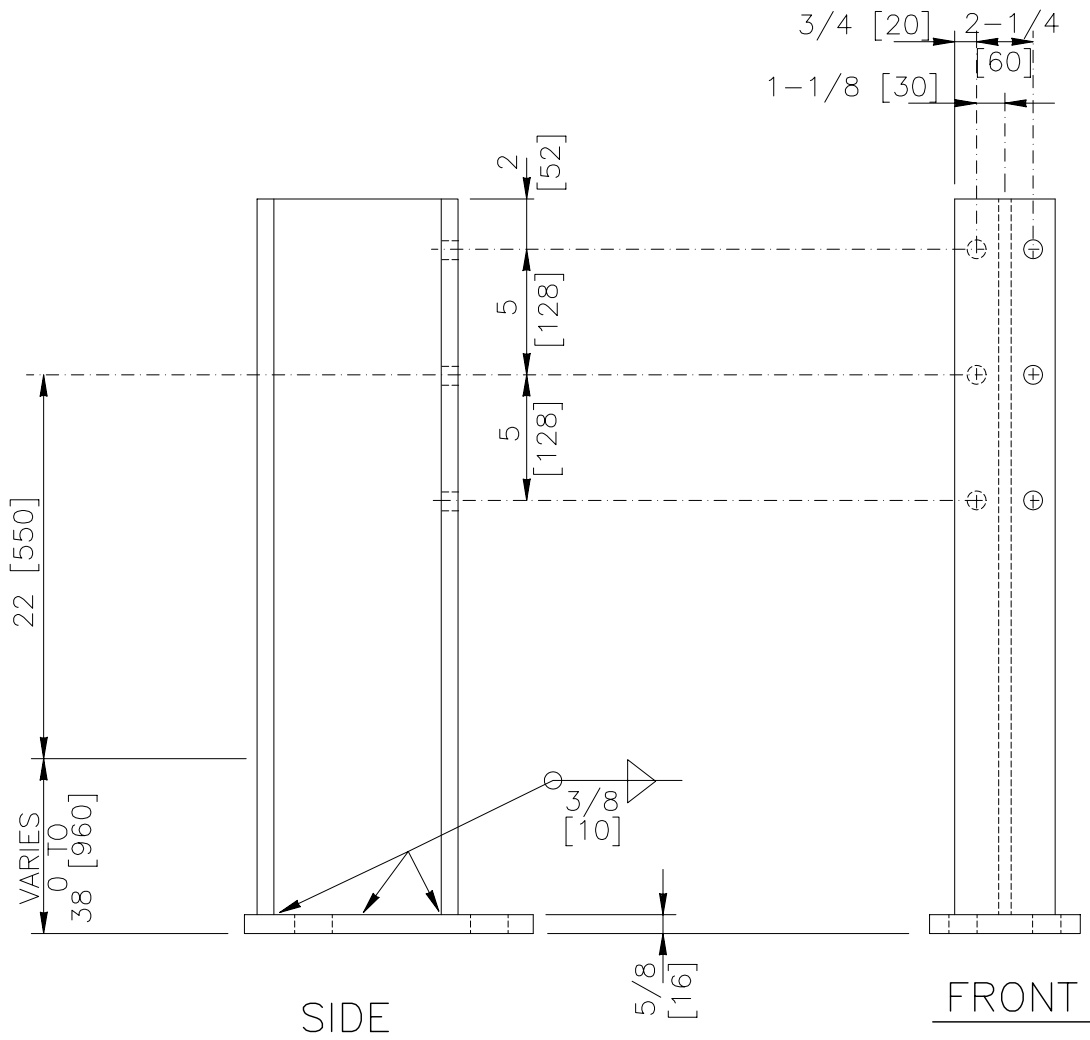
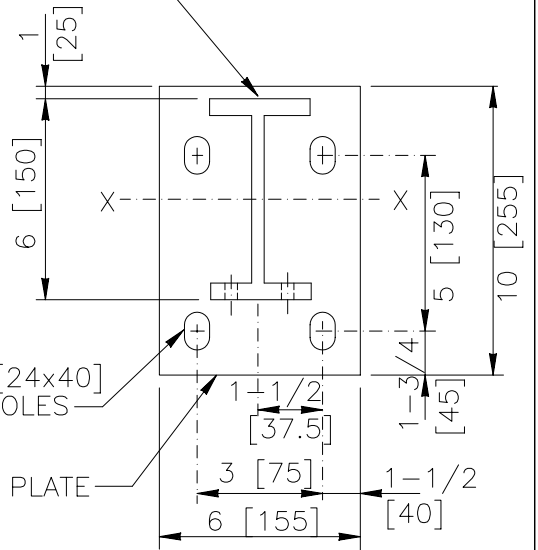
NOTES:

1. ALL HOLES $3/4$ [20] D UNLESS NOTED OTHERWISE.
2. THE POST LENGTH SHALL BE ADJUSTED SUCH THAT THE DISTANCE FROM THE ROAD SURFACE TO THE CENTER OF THE GUARDRAIL IS 22 [550].

W6x9 [W150x13.5]
STRUCTURAL SHAPE

1x1-1/2 [24x40]
SLOTTED HOLES
(TYP)

BASE PLATE



1994

CULVERT MOUNTED GUARDRAIL POST

PWF01

SHEET NO.

DATE:

1 of 2

8/04/2005

SPECIFICATIONS

The culvert-mounted guardrail post shall be manufactured using AASHTO M 270 / M 270M (ASTM A 709 / A 709M) Grade 36 [250] steel. The dimensions of the structural W6x9 [W150x13.5] section are defined in AASHTO M 160 / M 160M (ASTM A 6 / A 6M). [W150x12.6] wide flange posts are an acceptable alternative that is considered equivalent to the [W150x13.5].

After the section is cut, all holes are drilled or punched, and the base plate is welded on, the component should be zinc-coated according to AASHTO M 111 (ASTM A 123). Welding shall conform to ANSI/AASHTO/AWS D1.5.

Designator	Area		I_x		I_y		S_x		S_y	
	in ² [10 ³ mm ²]		in ⁴ [10 ⁶ mm ⁴]		in ⁴ [10 ⁶ mm ⁴]		in ³ [10 ³ mm ³]		in ³ [10 ³ mm ³]	
PWF01	2.63	[1.7]	16.43	[6.84]	2.19	[0.91]	5.57	[91.2]	1.11	[18.2]

Dimensional tolerances not shown or implied are intended to be those consistent with the proper functioning of the part, including its appearance and accepted manufacturing practices.

INTENDED USE

This post is used with strong-post guardrail system SGR05 when crossing a box culvert. The length of the post will vary when used in this application. The post length should be such that the distance from the pavement surface to the guardrail mounting bolt is 22 inches [550 mm]. A PWB01 steel blockout shall be attached to the post using at least two 1.5-inch [40 mm] FBX16a bolts and nuts. The RWM02a guardrail is attached to the blockout using an FBB02 bolt and nut.

CULVERT MOUNTED GUARDRAIL POST

PWF01

SHEET NO.

DATE

2 of 2

7/27/2005